

# Landscape

MIDDLE EAST | SEPTEMBER 2019





For industry-leading  
durability and performance,  
choose Rain Bird.

From water-saving nozzles to sprays with pressure-regulating stems to leading smart control technology, Rain Bird products deliver superior results with less water. Keeping landscapes around the world beautiful while conserving water. That's The Intelligent Use of Water.™

Learn more at [rainbird.com](https://rainbird.com)



UAE — JAFZA, Dubai T:  
+971 4 8819671 • [gulf-turf@rainbird.com](mailto:gulf-turf@rainbird.com)

KSA — Riyadh T:  
+966 12 6611525 • [KSA-turf@rainbird.com](mailto:KSA-turf@rainbird.com)

Egypt — Cairo M:  
+20 122 2188869 • [Egypt-turf@rainbird.com](mailto:Egypt-turf@rainbird.com)

**RAIN  BIRD®**

# EDITOR'S NOTE

In this issue,

Whether it's finding weather enduring, tough new grass seed for a project or inspiration for a residential garden that promotes privacy whilst maintaining a sense of wilderness, our September issue is packed with a range of exciting new projects from around the world! My editor's pick is an urban regeneration project in Perth that is destined to become a model for similar city reshaping projects due to its sustainable nature, namely its reliance on public transport rather than car parking. (See page 30)

Staying with efficient public transport networks, we look at the Ring Road project which is the main artery of the sprawling metropolis of Cairo. While the project isn't new, it was left unfinished and therefore a new proposal to connect previously isolated neighbourhoods is underway. (See page 34)

On page 18, we showcase LWK+PARTNERS projects as they revealed six new public realm in Dubai.

I hope you enjoy the issue!  
John Hampton

*The opinions and views contained in the articles in this publication are those of the contributors and not necessarily of the publishers. The publishers cannot be held liable for any mistake or omission enclosed in the publication.*

Managing Partner:  
**Ziad Maarouf Amine**

Copy Editor:  
**John Hampton**

Sales Manager:  
**Boushra Dinnawi**

Administrative Assistance:  
**Sarry Gan**

Art Director:  
**Ramon Andaya**

Contributors:  
**Rasha Mohamed, Tala Alnounou,  
Khateeb Babiker, Adam Ross,  
Vishesh Sawhney, Amr Aly,  
Anna Klingmann, Jimena Martignoni**

Printed by:  
**Al Nisr Publishing LLC**

Webmaster:  
**www.pdinventive.com**

For free subscription and to view the magazine  
please visit our website:

**www.landscape-me.com**

The First Specialised Landscape magazine in the  
Middle East

**Our magazine is available  
in app store and google play,  
search under Landscape  
Middle East.**

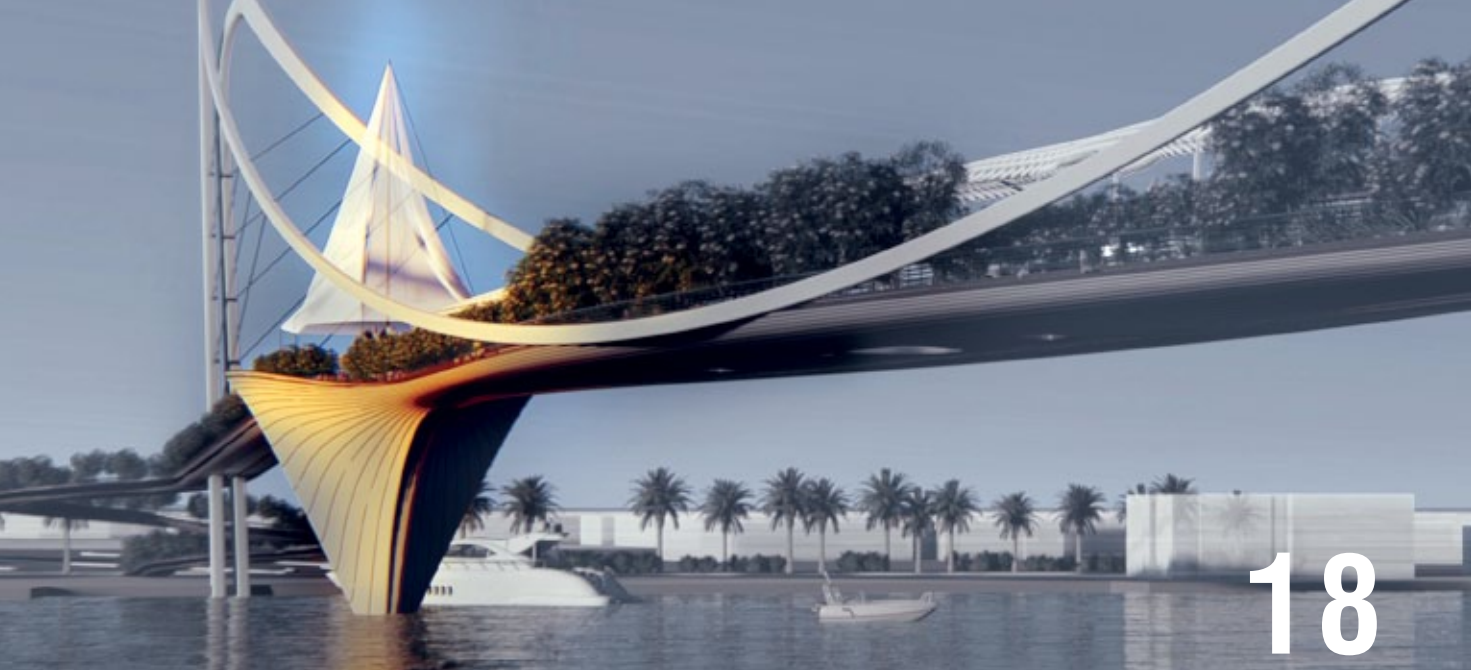
Landscape is distributed free of charge in KSA,  
UAE, Qatar, Kuwait, Bahrain, Oman, Jordan,  
Egypt, and Lebanon by Emirates Post UAE

PUBLISHED BY:

**MEMEDIA**  
Publishing

MEMedia Publishing FZ LLC  
IMPZ

PO Box 485005, Dubai, UAE  
Telephone: +971 4 4470927  
Fax: +971 4 4470928



18

# CONTENTS

September 2019 - Issue 147

- 18** Architect behind Dubai's six new public realm projects revealed
- 26** The Grass Seed Blend that Delivers
- 30** Urban park and stadium act as city-shaping project
- 34** Ring Road Development
- 40** Matured Accent Trees
- 44** A Tropical Paradise in Egypt
- 46** Wilderness at Home



26



30



44

# GET **CONNECTED** with Hunter and FX Luminaire



**Hydrawise™** Connects  
with **Irrigation**



**Luxor®** Connects  
with **Lighting**



**WHETHER YOU USE HUNTER IRRIGATION PRODUCTS, FX LUMINAIRE LIGHTING,** or both, you can count on us to provide the most innovative products incorporating the latest technology. We're proud to help you build a vibrant landscape during the day, and to bring it alive at night. As always, we stand behind every product we sell with the service and support you need.

# **Dubai Municipality plants 44,000 trees last year**

## **1.7 million sq meters of greenery added in Dubai in 2018**

Dubai Municipality has added 1.7 million square meters of green areas in the city in 2018 by planting 44,000 trees on the roads and squares of Dubai as part of its strategy to increase the green area in the emirate. It has completed cultivation on 172 hectares, which is equivalent to 1,720,000 square meters, bringing the total planted area till the end of 2018 to 3,701 hectares.

Dawoud Al Hajri, Director General of Dubai Municipality, said: "With the vision and directives of His Highness Sheikh Mohammed Bin Rashid Al Maktoum, Vice President and Prime Minister of the UAE and Ruler of Dubai, we have started to increase the green area in the emirate, targeting an average of 25 square meters per capita of green spaces in the urban area."

He continued: "We started planting local environment trees such as Ghaff, Sidr and trees that bear the salinity of our soil. We have developed and re-engineered agriculture on the roads and squares of Dubai and introduced for the first time new trees to withstand the UAE's environment, such as the Boseda and green Cassia trees, which were newly produced in the nurseries of the Municipality, in addition to the plant walls that prevent the encroachment of sand on the roads."

It is worth mentioning that the Dubai Municipality is keen on the horticultural field and in diversifying and increasing its patterns. This is reflected on Jumeirah and Al Wasl roads as these streets are characterized by agricultural density and clear diversity in the quality of plantation. In addition to that the green area on Airport Road, Nad Al Sheba area and Oud Metha is also increased and ornamental plants are found at the intersections of the bridges, which enhances its beauty. ■





Pebble Seat



Planter Seats

# ORIENT

## STONE TECHNOLOGY

Inspiring urban evolution

Experts in custom-made Cast Stone & Architectural Precast Concrete.

Renowned for imaginative, functional landscaping  
& street furniture solutions.

Every product manufactured in the UAE.

**BEAUTY • PERMANENCE • VERSATILITY • SUSTAINABILITY**



Tree Grate



Planter Pots

**FIND OUT HOW TO TURN YOUR VISION INTO AN AFFORDABLE REALITY**

**ORIENT STONE TECHNOLOGY FACTORY L.L.C.** P.O.Box: 150856, Sharjah-UAE

• Tel: +971 6 5430832 • Fax: +971 6 5430831 • Email: [info@ost.ae](mailto:info@ost.ae) • [www.ost.ae](http://www.ost.ae)



# Ras Al Khaimah Municipality selects Grundfos to explore energy efficiency in pumping systems



*Grundfos & RAK MOU*

Ras Al Khaimah (RAK) Municipality has selected Danish water and climate solutions Grundfos to provide an audit of HVAC, irrigation, water supply and disinfection pumping systems across 50 buildings and operational facilities, including large-scale sewage plants.

A Memorandum of Understanding (MOU) was signed today to begin the audit, which is expected to take up to seven weeks. Grundfos will also conduct systems' certification and maintenance training for Ras Al Khaimah Government's building managers and supervisors.

"The MOU is aligned with the Municipality's vision to pioneer sustainable urban development and create healthy and happy communities. The audit will help us explore further ways to reduce energy costs, by working with Grundfos' expert team on pumping systems, which drive a significant part of our energy consumption", said His Excellency Munther Mohammed bin Shekar, Director General, Ras Al Khaimah Municipality.

The audit will be overseen by the Municipality's Energy Efficiency and Renewables Administration (Reem) which is coordinating the implementation of the RAK Energy Efficiency and Renewable Energy Strategy 2040, established under the patronage of His Highness Sheikh Saud bin Saqr Al Qasimi, Supreme Council Member and Ruler of Ras Al Khaimah. The strategy targets 30% energy savings, 20% water savings and 20% generation from renewable energy sources by 2040 and comprises a program to retrofit approximately 3,000 buildings over the two decades.

Kostas Pouloupoulos, Grundfos Area Managing Director, Gulf, Levant and Pakistan said the MOU reflects the coming together of two like-minded organisations. "We are both prominent leaders in our specific industries with a joint vision on sustainability and well-being of the planet," he said.

The MOU signing follows Grundfos' recent launch of the free 'Energy Check' to organisations in the UAE to help root out inefficient equipment and promote water conservation.

"The UAE has some of the highest water consumption rates in the world," said Kostas. "On an average, the national per capita water consumption rate in the Emirates, including personal, residential, commercial and agriculture is 550 litres per day as compared to 170-300 litres internationally. Much can be done to minimise water consumption in buildings, manufacturing and other sectors by utilising the latest digital technology to make pumping solutions as efficient as possible and reduce wastage."

## About Ras Al Khaimah Municipality and Reem

Ras Al Khaimah Municipality was established in 1959 by an Emiri decree issued by His Highness Sheikh Saqr bin Mohammed Al Qasimi, may Allah have mercy on him, and since then works on providing a comfortable environment in which people can live and work. The Energy Efficiency and Renewables Office (Reem) at Ras Al Khaimah Municipality coordinates the implementation of the RAK Energy Efficiency and Renewable Energy Strategy 2040, established under the patronage of His Highness Sheikh Saud bin Saqr Al Qasimi, Supreme Council Member and Ruler of Ras Al Khaimah, targeting 30% energy savings, 20% water savings, and 20% generation from renewable energy sources by 2040.

## About Grundfos

At Grundfos, sustainability is the core of our business.

Grundfos is a pioneer in water and climate solutions. It sets the standard for innovation, efficiency, reliability and sustainable solutions that improve quality of life for people and care for the planet.

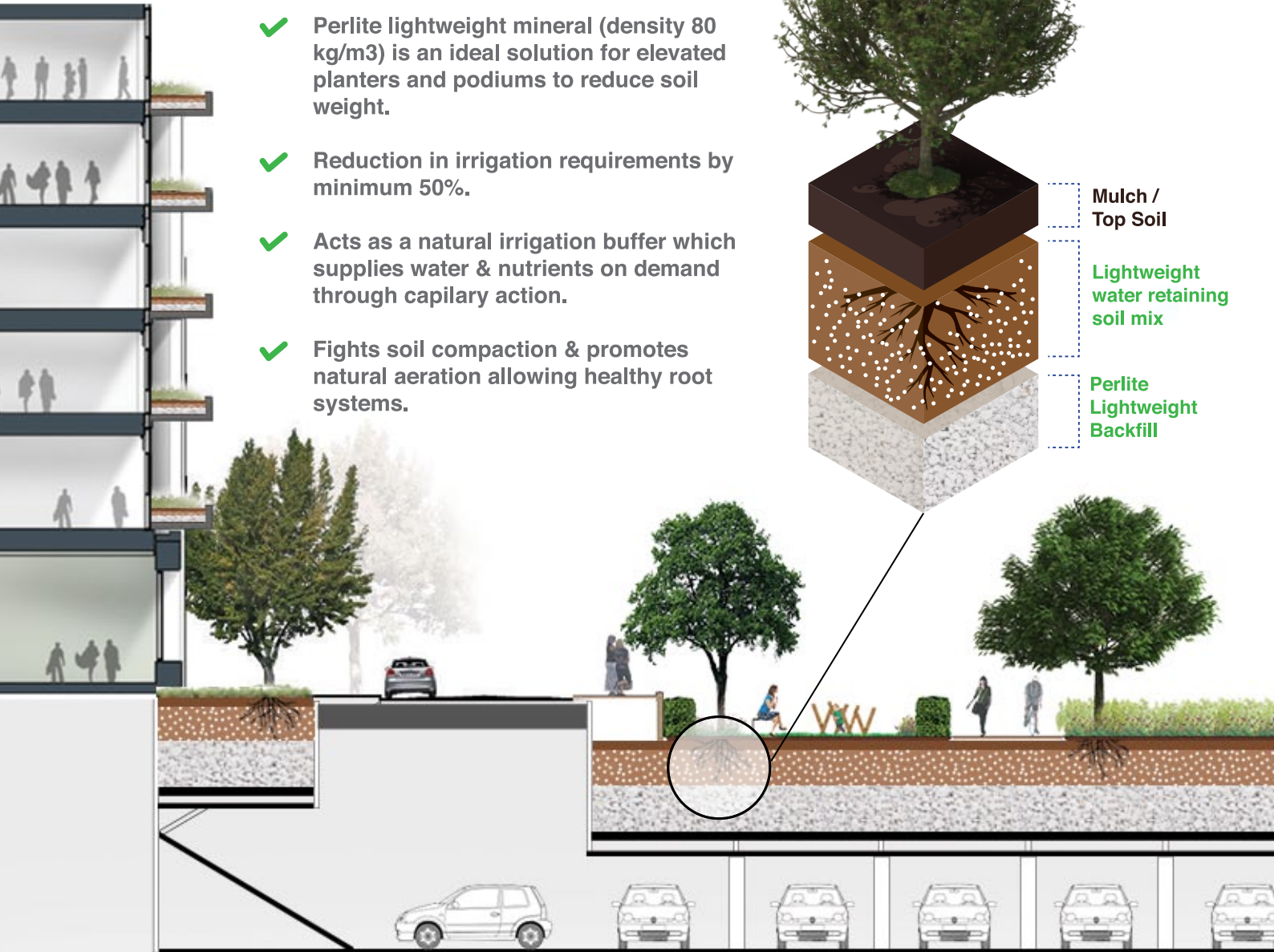
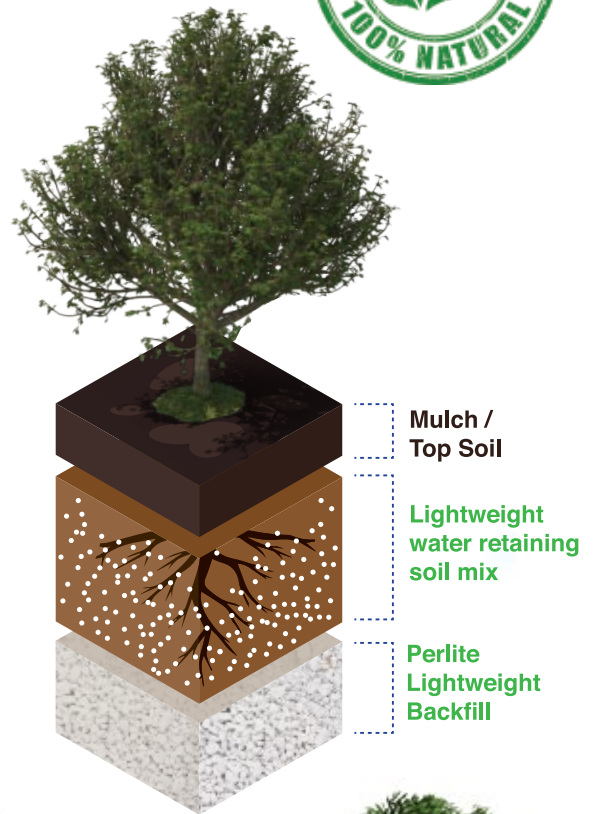
The company strongly advocates and is engaged in UN Sustainable Development Goals 6 & 13. Connecting with millions and millions of people every day, Grundfos's energy efficient solutions help move water to where it is supposed to go; providing drinking water for the smallest villages and the highest skyscrapers, treating and removing wastewater and bringing heat and comfort to the world – or cool it down if needed.

With over 19,000 employees in 56 countries, Grundfos provides energy efficient pumping solutions for various applications across diverse segments including domestic, commercial buildings, industries, water utilities (water & wastewater management) and pumps running on renewable energy. ■

# Perlite Lightweight Natural Mineral



- ✓ Perlite lightweight mineral (density 80 kg/m<sup>3</sup>) is an ideal solution for elevated planters and podiums to reduce soil weight.
- ✓ Reduction in irrigation requirements by minimum 50%.
- ✓ Acts as a natural irrigation buffer which supplies water & nutrients on demand through capillary action.
- ✓ Fights soil compaction & promotes natural aeration allowing healthy root systems.



NATURAL



LIGHTWEIGHT



INERT



SOIL  
CONDITIONER



WATER  
SAVING



MADE IN  
UAE



**Gulf  
Perlite** LLC



P.O Box: 263275  
National Industries Park,  
Jebel Ali, Dubai - UAE

+971 4 8894 904 | +971 56 608 0223 | [info@gulfperlite.com](mailto:info@gulfperlite.com)

# ASLA Publishes Guide to Universal Design

The guide highlights innovative landscape designs that make outdoor spaces accessible to all.

Everyone navigates the built environment differently, with abilities changing across a person's lifespan. One billion people, or 15 percent of the global population, experience some form of disability. The global population of people over 65 years of age is expected to double by 2050, totaling 1.6 billion people. Universal design means that everyone, regardless of ability or age, can access and participate in public life.

ASLA's guide provides a comprehensive view of which communities are underserved by the built environment. It also offers a set of new universal design principles that address the needs of deaf or hard of hearing, blind or low vision, autistic, neurodevelopmentally and/or intellectually disabled, and mobility-disabled adults and children, as well as concerns for older adults. These include: accessible, comfortable, participatory, ecological, legible, multi-sensory, predictable, and walkable/traversable.

This guide serves as an entry point into Universal Design, asking designers to assess our existing design models and projects, and to include disabled folks as stakeholders and experts in the design process, said Alexa Vaughn, Associate ASLA, a landscape designer at OLIN. As a Deaf landscape designer, I am elated that landscape architects, designers, planners, elected officials, and beyond have started to think about Universal Design.

Landscape architects, urban planners, elected officials, and community advocates can implement these real-world solutions in their communities to ensure that the built environment is accessible to all.

As our society ages, those of us involved in creating public places must understand the unique challenges that accessing public spaces has for older adults, said landscape architect Brian Bainson, ASLA, founder of Quatrefoil, Inc. The simple concepts captured in this guide provide clear, achievable steps that will make our public spaces safer and more accommodating for everyone.



The ASLA Guide includes hundreds of freely-available case studies, research studies, articles, and resources from non-profit organizations around the world.

Projects and solutions are organized around different types of public space that landscape architects and planners design: neighborhoods, streets, parks and plazas, playgrounds, and public gardens.

New design principles identified ensure that public spaces are:

- Accessible
- Comfortable
- Participatory
- Ecological
- Legible
- Multi-Sensory
- Predictable
- Walkable / Traversable

The guide was developed with the assistance of an advisory group that includes disabled landscape architects, designers, and experts: Danielle Arigoni, director of livable communities, AARP; Brian Bainson, ASLA, founder, Quatrefoil Inc.; Melissa Erikson, ASLA, principal, director of community design services, MIG, Inc.; Emily O'Mahoney, FASLA, partner, Gentile Glas Holloway O'Mahoney & Associates; Clare Cooper Marcus, Hon. ASLA, professor emerita of architecture and landscape architecture and environmental planning, University of California, Berkeley; Danielle Toronyi, OLIN; Alexa Vaughn, Associate ASLA, Deaf landscape designer at OLIN. ■



Flexible  
Sustainable  
Transformational

*Indoor Green Wall at Private Office, Business Bay*



*Outdoor Green Wall at Burj Park, Downtown Dubai*



*Free Standing Green Wall System at Hyatt Regency, DHC*

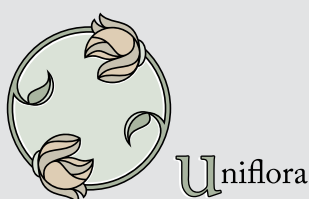
## INDOOR & OUTDOOR LIVING GREEN WALLS



Biotecture's patented hydroponic system from the U.K. brings a new level of sustainability through intelligent water management and stable system dynamics

Exclusive Living  
Wall solutions  
provider in the GCC

[www.uniflora.ae](http://www.uniflora.ae)  
[www.greenwalls.ae](http://www.greenwalls.ae)



*A member of the Tanseeq Investment Group of Companies*

**Uniflora LLC**

P.O.Box: 3151

Dubai, U A E

Tel: +971 4 321 6545

Fax: +971 4 380 1717

E-mail: [info@uniflora.ae](mailto:info@uniflora.ae)

# The winners of the 2019 Aga Khan Award for Architecture who will share US\$ 1 million between them, are:

## **Bahrain**

Revitalisation of Muharraq, which highlights the World Heritage site's pearling history, was first initiated as a series of restoration and reuse projects. The project evolved into a comprehensive programme that aimed to re-balance the city's demographic makeup by creating public spaces, providing community and cultural venues, and improving the overall environment.

## **Russian Federation**

Public Spaces Development Programme, in the Republic of Tatarstan, a programme that, to date, has improved 328 public spaces all over Tatarstan. The ambitious programme sought to counter the trend toward private ownership by refocusing priorities on quality public spaces for the people of Tatarstan. It has now become a model throughout the Russian Federation.

## **Bangladesh**

Arcadia Education Project, in South Kanarchor, a modular structure – incorporating space for a preschool, a hostel, a nursery and a vocational training centre – that takes a novel approach to a riverine site that is often flooded for five months every year. Rather than disrupting the ecosystem to create a mound for building, the architect devised the solution of an amphibious structure that could sit on the ground or float on the water, depending on seasonal conditions.

## **Senegal**

Alioune Diop University Teaching and Research Unit, in Bambey, where a scarcity of resources led to the use of bioclimatic strategies, including a large double roof canopy and latticework that avoids direct solar radiation but allows air to flow through it. By employing locally familiar construction techniques and following sustainability principles, the project succeeded in keeping costs and maintenance demands to a minimum, while still making a bold architectural statement.

## **Palestine**

Palestinian Museum, in Birzeit, which crowns a terraced hill overlooking the Mediterranean and is the recipient of the LEED Gold certification because of its sustainable construction. The zigzagging forms of the Museum's architecture and hillside gardens are inspired by the surrounding agricultural terraces, stressing the link with the land and Palestinian heritage.

## **United Arab Emirates**

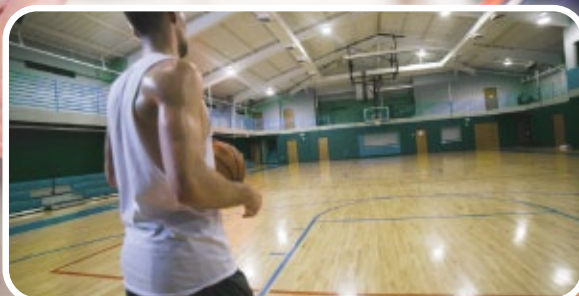
Wasit Wetland Centre, in Sharjah, a design that transformed a wasteland into a wetland and functioned as a catalyst for biodiversity and environmental education. While its indigenous ecosystem has been restored, it has also proven to be a popular place for visitors to appreciate and learn about their natural environment. ■

---

## **About the Aga Khan Award for Architecture**

*The Aga Khan Award for Architecture's mandate is different from that of many other architecture prizes: it not only rewards architects, but also identifies municipalities, builders, clients, master artisans and engineers who have played important roles in the realisation of a project. Prizes have been given to projects across the world, from France to China. Architects and planners from New York to Dhaka have received one of 122 awards. During the nomination process, more than 9,000 building projects have been documented. The Award was established by His Highness the Aga Khan in 1977 to identify and encourage building concepts that successfully addressed the needs and aspirations of communities in which Muslims have a significant presence.*

# SURFACES BUILT FOR CHAMPIONS



From Youth Camps to Competitive Pickup Games, Local Athletes Can Now Play on One of the Industry's Most Responsive Basketball Courts.

A Sports Flooring System Providing Performance throughout the Floor with High Shock Absorption, Ball Rebound and an anti-vibration system for comfort of play.

Consisting in General of a Vapor Barrier, PVC pads, Wood Subflooring, Maple Flooring, Sanding, Sealers, Finishes, Game Lines and Wall Base.

PERFORMANCE | STRENGTH | MULTI-SPORT



YOUR GAME. OUR BUSINESS.



+971 4 339 1331 (Dubai) | +971 2 449 9196 (Abu Dhabi) | office@raymondssport.com | www.raymondssport.com

# FLOWPOINT PERFORMS ON 'THE MOST PRESTIGIOUS SQUARE KILOMETRE IN THE WORLD'

Instarmac International's partner in Dubai, Tanseeq LLC, has supplied world-renowned flowpoint grout as part of a 9,000m<sup>2</sup> paving project at the beautiful Dubai Opera.

Famed as being located in 'the most prestigious square kilometre in the world', the Dubai Opera is the city's first purpose built multi-format performing arts theatre. It is designed to seamlessly transform from a 2,000 seat theatre, to a concert hall and into a 'flat floor' for hosting banquets and events. The Dubai Opera brings art and music to life like never before. Located in stylish Downtown Dubai, the Dubai Opera is celebrated for its contemporary design, rooftop restaurant and sky garden where diners can enjoy view of the iconic Dubai Fountain and Burj Khalifa.

The Dubai Opera is known worldwide for its quality entertainment productions, performances and beautiful aesthetics. When building began, it was crucial that the splendour of the opera house was extended to the surrounding area.

UltraScape flowpoint was specified and chosen to grout 9,000m<sup>2</sup> of paving around the beautiful Dubai Opera. Flowpoint is part of the UltraScape Mortar Paving System which has been independently tested to British Standard 7533 and has been developed over a number of years to provide a durable finish which will not crack or stain – even in the extremely high temperatures of Dubai.



UltraScape flowpoint is a flowable grout which allows for large areas of paving to be grouted quickly, easily and efficiently. It can be used to grout joints from 5mm to 50mm and as deep as 200mm in one application. Flowpoint can also receive foot traffic in one hour and vehicular traffic in four hours of application – ideal for projects where minimal disruption and early trafficking is essential, such as in Dubai Opera.

UltraScape flowpoint is available in three varieties – Original, ECO and Smooth – and 2 colours – Charcoal and Natural Grey.

The Dubai Opera is just one of many prestigious projects paved by flowpoint in Dubai. UltraScape's Mortar Paving System has also been specified and used to grout 9,000m<sup>2</sup> of paving at the luxurious MBR City and 40,000m<sup>2</sup> of paving at the opulent City Walk. ■

*UltraScape flowpoint is available throughout the UAE through Tanseeq LLC. To contact Tanseeq LLC please call +971 (04) 361 7199 or visit [www.tanseeqllc.com](http://www.tanseeqllc.com).*

*For further information on flowpoint, and the other materials that make up UltraScape's Mortar Paving System, please contact Instarmac International's sales team by emailing [international@instarmac.com](mailto:international@instarmac.com) or calling +44 (0) 1827 254402.*



## FOR THE MOST PRESTIGIOUS PROJECTS CHOOSE ULTRASCAPE'S MORTAR PAVING SYSTEM



40 year  
design life



Open to foot traffic  
in 1 hour and vehicular  
traffic in 4 hours



Durable.  
Proven.  
Trusted.



Opera House



MediaCityUK Manchester



Granary Square London, UK



W: [www.tanseeqllc.com](http://www.tanseeqllc.com)  
T: +971 (04) 361 7199  
E: [info@tanseeqllc.com](mailto:info@tanseeqllc.com)



RIBA  
Royal Institute of British Architects



INSTARMAC  
INTERNATIONAL

A member of the Tanseeq Investment Group of Companies



# Pioneering the real estate investment approach by One Broker Group at Open House in collaboration with Emaar

To enlighten investors and end-users on the potential in upcoming launched areas and new concepts in the real estate market



One Broker Group (OBG), is a UAE based Real Estate Brokerage Company, who recently hosted an Open House Event as an alliance of EMAAR, to enlighten investors and end-users about the current opportunities in developing areas, and uprising potential opportunities of the future projects of EMAAR

OBG, established in 2016 after a successful collaboration of two biggest and most experienced real estate corporations, which was designed to deliver world-class property services to stakeholders, end to end project solutions for major developers, and to become a leading real estate company in the Middle East Region and globally.

The main objective of the Open House held at the Dubai Hills Estate - Sales Pavilion last August 25, 2019, to showcase the current and upcoming launch areas by the majestic Developer, as well as the EMAAR's new concepts in the real estate market. OBG provided full information about the projects to the investors and end-users regarding the flexible payment plans, availing of interest-free terms, and different modes of payment.

Through this Open House event, an investment of AED 25 Million was generated from investors and end-users. The event also sheds light on various comparisons and statistical analysis of the competitive areas in the growing real estate sectors. Investors were made aware of the new green living communities and landscapes within the UAE. The event was supported by Emaar's senior team all through the occasion.

Upon highlighting the Open House's uniqueness, Towqeer Gilkar, Senior Investment Director at One Broker Group, said "Currently it is very important for real estate firms to inform the general masses with the in-depth knowledge of the projects and the potential in the upcoming projects and the latest investment opportunities in the market. We must not limit to smart investment, cost-effective investment, analysis on ROI for investors, better living communities for the end-users."

"The event was aimed to emphasize on the latest projects by the developer, Emaar and how they have evolved through time and upgrade the existing communities and to blend it with current trends; a novel and contemporary concept of green living communities with better infrastructure infused with technology that will appeal to the current generation's need." He added further.

The Open House gathered an attendance of 300 individuals who are investors and end-users, and from the major investment firms, including senior officials from Emaar and One Broker Group. The event produced a good traction on OBG's social platforms and was regarded as a highly informative conference that ensured mass reached, even to the general public.



# Solis

TRACTORS

## WINNING MARKETS ACROSS THE GLOBE

Solis Tractors are touching the lives of millions across **120+ countries** worldwide, we aim to export the best of tractor technology to every customer. As we move ahead in our journey of conquering markets, we strive to accelerate tractor technology towards the next generation of excellence.

# 120+ COUNTRIES

# 6

AMONG TOP 6 TRACTOR  
MANUFACTURERS  
GLOBALLY



STRATEGIC  
COLLABORATION  
WITH **YANMAR** JAPAN



WORLD'S LARGEST  
INTEGRATED TRACTOR  
MANUFACTURING PLANT



AUTHORIZED  
DISTRIBUTOR



VENTANA LLC | P.O.BOX: 127822 | DUBAI | UAE  
TEL: +971 455 79 160 | FAX: +971 455 79 141

WWW.VENTANALLC.COM  
INFO@VENTANALLC.COM

A MEMBER OF THE TANSEEQ INVESTMENT GROUP OF COMPANIES

### Rain Bird goes beyond just selling great products with the Factory Trained Installer Training Program



#### Training completed:

19-23 Aug 2019 – Mumbai

#### Trainer:

Mr. Tom Horn

#### Course agenda

Day 1-3: Basics of Irrigation

Day 4 : Automation & its design principal and installation techniques.

Day 5 : IQ Central control india

Rain Bird products are the best in design and they are the most water-efficient in the market. We also boast of being the first in the industry to have initiated Irrigation Installation courses. Rain Bird offers a comprehensive selection of Irrigation Installation Training courses for the Turf Landscape Contractor, Irrigation Technician, Distributor, Business Owner and Water Conservation Practitioner.

For the second consecutive year in a row we had the Rain Bird Factory Trained Installer Training Program which was held in Mumbai on 19th-23rd August 2019. Not only did many participants come from across the country to be trained by us, we had participants from the GCC and Indian sub-continent.

Mr. Tom Horn, the trainer, with over 25 years of experience in the Irrigation industry and a certified trainer by the Irrigation Association took sessions on various topics ranging from field installation techniques, troubleshooting to general product knowledge and Central Control System. The trainees had hands on practical sessions. In addition to Mr. Horn's training sessions we had a guest speaker Ms. Bhakti Thakoor, an established Landscape Design and Planning Architect. She spoke on 'Landscaping Design Process and Expectations from Irrigation Contractors' which led to a meaningful discussion on an architect's expectations and contractors' responsibilities.

We, at Rain Bird, aim towards training installers across the country. This knowledge of the Best Installation Practices is the need of the hour to ensure the best use of our most precious resource-water.

The Intelligent Use of Water™

Rain Bird Factory Trained  
Installer Training Program

Rain Bird goes beyond just selling great products with the Factory Trained Installer Training Program



# FINISH STRONG

World-class paving and decking support systems

Visit [rynogroup.co.uk](http://rynogroup.co.uk) to learn more

# Architect behind Dubai's six new public realm projects revealed

**LWK+PARTNERS collaborates with the UAE's Roads and Transport Authority to realise Dubai's latest public realm projects**

---

By: LWK + PARTNERS

The MENA Studio of Hong Kong-based practice LWK+PARTNERS has recently completed a unique package of urban engagement projects in collaboration with Dubai's Roads and Transport authority RTA, that were approved at the end of April by H.H. Sheikh Mohammed bin Rashid Al Maktoum, Vice President and Prime Minister of the UAE and Ruler of Dubai.

LWK+PARTNERS were given the challenge to revitalise the cities' public realm, mobility and permeability needs in partnership with RTA. The practice focused on the pedestrian experience and place-making, which can be achieved by utilising advanced integrated transport technology, and the activation of the public realm by inclusion of Public Art and improved mobility.

The design brief highlighted the needs for better connectivity across the city and opportunities to create new destinations at strategically important locations. The six commissioned projects established an imperative of addressing the need for 'Urban Transformation' across the city of Dubai and making it more human-centric. The initiatives are aimed at enhancing the day-to-day happiness needs of the established communities in which they are located.

Working on the project was challenging, with both a tight time frame and a broader vision at its heart that need to be activated appropriately for a nation that constantly strives to improve and set new benchmarks around 'liveability' and relevance for its citizens and visitors alike.

---

## About LWK + PARTNERS

*LWK + PARTNERS is a leading design architecture practice rooted in Hong Kong. We are a platform with design specialists who deliver world-class solutions to the built environment. Our 1,000+ creative minds collaborate across a network of 11 offices around the globe providing services including architecture, planning & urban design, interiors, heritage conservation, landscape, building information modelling (BIM), lifestyle and lighting design. With over 34 years of growth, we have completed many outstanding projects across different sectors, such as mixed-use, commercial, residential, transit-oriented developments, and leisure and public facilities developments. We create infinite possibilities.*



## Deira Plaza

In areas that face high traffic volume and congestion an attempt to encourage more vibrant Public Realm activities is needed to assist in mitigating the unfriendly pedestrian environment. Deira Plaza is designed to promote environmentally comfortable public spaces by offering an Urban Plaza programme, without compromising the much-needed vehicular parking facilities required by residents and visitors.

The Plaza will cover an area of 35,000m<sup>2</sup> and provides a multi-layered urban public space for

entertainment and community activities. The design sensitively increases the parking numbers to around 1000 spaces, as well as including a series of urban parks, performance and event facilities, with food and beverage outlets which provide unique urban experiences in Deira.

Such Urban Squares as pocket play a very important role in Social Life, not only by serving its community but contributing towards creating a vibrant, dynamic and liveable city.



## REVITALISATION



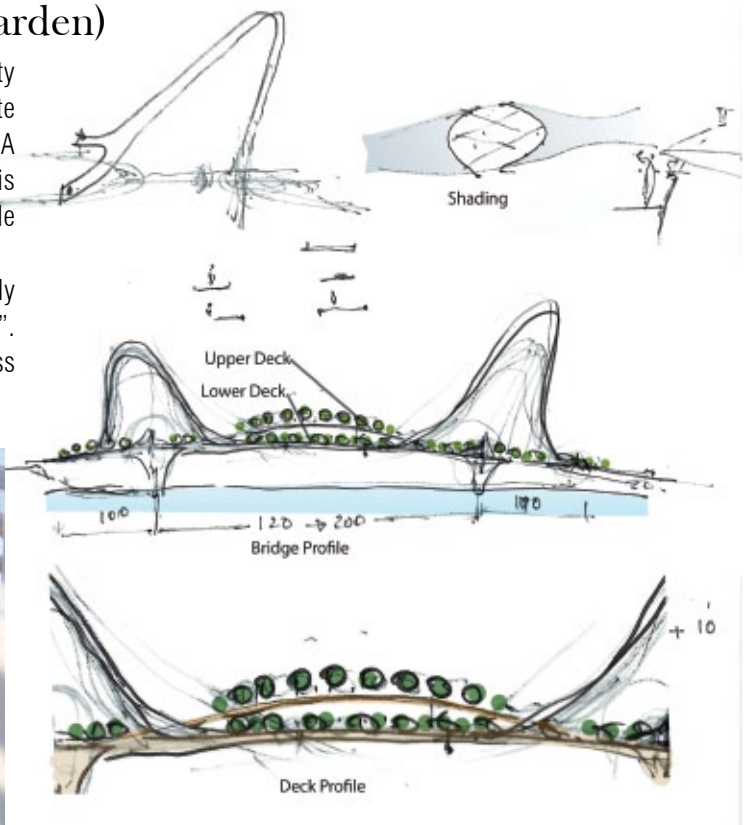
### Hanging Garden Bridge (Sky Garden)

Dubai creek is a vibrant and essential artery of the city and a vital resource that the RTA wished to activate by facilitating easy connectivity across its banks. A 'living bio footbridge' with engaging public activities is proposed to connect the Al Seef area to the Deira side towards the Union Square.

The concept was loosely based on the historically recognized notion of the "Hanging Gardens of Babylon". Expect here a green Oasis is "Suspended" in the air across the Creek, linking two historic parts of the city of Dubai.



The bridge spans 380m in length, 60m in height and covers an area of 3,422m<sup>2</sup>. It will be a new Dubai landmark and tourist destination for residents and visitors, it will connect many of the city's existing landmarks along the shores of Dubai Creek. It has a hanging garden extending along the length of the bridge together with multi-level lanes for strolling, cycling and running.



The bridge offers panoramic views that stitch together old and new Dubai and offer commercial and F&B outlets along its length. A naturally shaded environment with treelined route allows for recreation activities encouraging healthy outdoor activities, engagement and interaction.

This architectural marvel has the potential to be a wonder of the modern world with its remarkable engineering & design.





## Sheikh Zayed Road promenade

A challenge in designing a successful urban space is encouraging visitors to take active participation in their surroundings. Such placemaking initiatives can be achieved through the use of public art, commercial and F&B kiosks and community engagement components all of which the Sheikh Zayed new activation cleverly responds to in rejuvenating the harsh public realm experience that currently prevails.

People respond to art that connects them emotionally and physically – art they can interact with, that adds soul and a deeper conceptual meaning to the shared experience of public life. Art in the urban environment taps into human emotion, linking the individual to the collective, conceptually narrating the place in which it is situated.



Sheikh Zayed Road occupies some of the most centrally located public space in Dubai. The promenade is located between Dubai World Trade Centre and Financial Centre Metro Stations and utilises the area underneath the Dubai Metro viaduct, transforming it into a 2.5 km green artery for the public to engage in walking, cycling, gathering and contributing to public events and engagements. The walkways include three key nodes – Bazaar Street, Technology Park and Urban Park covering an area of 54,000m<sup>2</sup>.



## REVITALISATION



### Skypods

Technological innovations will continue to have a profound impact on urban living and the future of our cities.

It is estimated that over 70% of the world population will be living in cities by 2050. The over population and density will impose great restriction on mobility and means of transport.

It is imperative that we invest in the new modes of public movement, if our cities to remain functional, liveable and free of congestion.

One such way is the suspended mono-rail , Cable Car system. It is a fast, agile and efficient mode of transport, suited to the demands of 21 century metropolises.

The suspended transit system links vital spots across the city such as the Dubai Financial Centre and the Downtown with the Business Bay. Passing through the Happiness Street and runs up to City Walk, through tracks extending one kilometre in length, the project,

which has 21 stations and the capacity to transit 8,400 riders per hour per direction, offers an urban transit experience.

The Cable Car network will be integrated with the cities exciting wider transport system. Miniating a futuristic feel to the urban transit experience is curtail and that was considered during the design exercise for terminal and arriving stations.

The Cable stations were designed to be light, efficient and in harmony with the current Metro Stations appearance and form. The approved designs for the Cable Cars and the support Structure systems complements the Dubai streetscape without adversely impacting the skyline giving the city a unique futuristic identity.



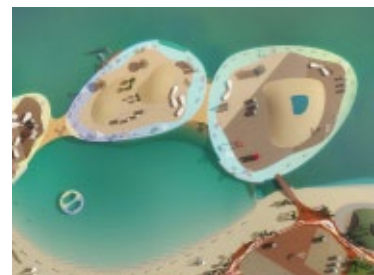


## Sunset Promenade

The new beachfront destination features a unique range of activities it covers an area of 80,000m<sup>2</sup> connected to Jumeirah Beach Walk and specially designed to cater for family entertainment.

Dealing with the site restrictions and narrow beach depth, Sunset Promenade offers a range of small Islands which would be partially reclaimed and floating pontoons/platforms, to provide additional seafront facilities with a total beach area of 107,000m<sup>2</sup>. The floating portion is designed not disturb the seabed and the surrounding marine life, providing unique opportunities for a more ecologically sensitive development.

The Promenade will feature green hills, sandy hills, parking lots, public facilities and retail and dining spaces, with zones uniquely programmed to encourage all day and evening entertainment activities, in a more sustainable way.



## REVITALISATION



### Umm Suqeim pedestrian bridge

Improving mobility is not only a potential solution to improve transportation services for citizens, but it's also an opportunity to connect valuable urban spaces across the city, which could be better used to cater to public needs and raise liveability standards.

110m pedestrian bridge above Jumeirah Street with dedicated cycling and running lanes. The bridge facilitates better connectivity between Umm Suqeim & Jumeirah. The bridge aims to encourage pedestrian activities and promote safe and environmentally comfortable public spaces across the city. Connecting some of the key destinations like the Madinat Jumeirah Souq, to the Mall of the Emirates Metro links, and across to the Dubai Hills Mall.

Bridges can be more than simple structures; their role is vital in connectivity hence it is important to find new ways of utilizing them. Bridges can showcase a lot more than their architectural language.

We Thank Roads and Transport authority RTA for this exceptional opportunity and we highly appreciate them selecting us as their trusted collaboration partner for such high calibre projects. LWK+PARTNERS employs 20 years of experience in urbanism and research where they helped shaping experiences that focus on communities and pedestrians. We believe emphasis should always be on a connected

urbanism and on the people, their health and how urbanism can improve their lives. By investing in the needs of the residents and devoting the necessary resources to funding human-centric projects, cities can improve the lives of individuals and thereby make society more productive and happier. ■





## Brilliant In The Sun

Poolside and in children's playgrounds, PolySoft surfaces are a sophisticated solution for outdoor areas where fun in the sun can also be hot and hazardous.

Installed by leading hotels such as the jewel-like Bvlgari Resort Dubai, in New York's Central Park, in the beautiful splash parks of Saudi Arabia and at China's luxury Jin Fang Spa, PolySoft can be designed to enhance or blend with every environment.

The exciting range of vivid and subtle PolySoft hues is just the start of cutting-edge technology that mitigates the risks of slipping and provides a soft-fall landing for boisterous and adventure-seeking kids. Those colours are also formulated to retain their brilliance in harsh UV conditions and under exposure to chlorine.

Managing Director of PolySoft, Ophelia Zhu, says "Our Australian researchers spent years evolving and testing a new surface treatment that would make problematic aquatic and playground zones safer and more beautiful." The scientists' ultimate solution was to combine polyolefin beads in an aliphatic binder that pours flexibly around obstacles and play equipment and can be applied to seamlessly cover steps, pool edges and play platforms.

The resulting surface is kind to bare feet, not only because it is softer than concrete or tiling, but because it

stays cooler than those surfaces.

Developed for searingly sunny Australian conditions, PolySoft has poured its own welcome mat in the hot holiday capitals of the world — from Queensland to Cancun.

At home in the high-tech headquarters of Google or in a tropical garden, PolySoft appeals to people who want to worry less and enjoy more of life's pleasures.

### THE QUALITIES OF POLYSOFT:

- Surface temperatures cooler than concrete, asphalt or rubber
- Independently verified anti-slip rating for wet or dry applications
- Resilient yet soft underfoot
- Excellent impact attenuation for playgrounds
- Hygienic and easy to maintain.
- The strong chemical bond between PolySoft particles ensures superior lateral strength and durability.
- Colourfast technology protects against premature fading and provides resistance to UV radiation, and to chemicals such as chlorine.

Enquire about PolySoft surfaces by calling +61 2 9624 1388 or visit [www.polysoftsurfaces.com](http://www.polysoftsurfaces.com)

# THE GRASS SEED BLEND THAT DELIVERS

Newly developed  
Bermudagrass blend is  
the ideal combination of  
turf attributes

*Meeting the landscaping challenges of the Middle East is not easy for any single turfgrass. However, when the most elite seeded bermudagrasses are blended, their combined attributes create a turfgrass that is up for the task. New PurePro Seeded Bermudagrass from Pure Seed and marketed worldwide by Atlas Turf International is a blend of the industry's highest-performing hybrid Bermuda's. PurePro is available in the Gulf Region through Polyclean Turf Division.*

### Introducing PurePro Seeded Bermudagrass

For landscape applications, the list of desirable turfgrass traits can be long, but the common goal is a reliable, easily maintained product meeting the needs of the user. As a blend of top quality bermudagrasses, PurePro offers the best of each of its components.

Dr. Melodee Fraser, director of Pure-Seed Testing, is the developer of Pure Pro's primary bermudagrass component, North Shore SLT. Earning her Ph.D. in plant breeding, Dr. Fraser is familiar with the benefits of seed blends. "The genetic variation is higher in a blend, so the blend may be more broadly adapted than any of the single components alone."

The key to creating a successful blend, according to Dr. Fraser, is combining the right parts. "Varieties should have similar morphology, so the turf is uniform. Varieties might complement traits of each other; one may establish faster, have better resistance to a disease, etc."

The combination of Pure Pro's components provides benefits not found in any one variety. The advantages are evident from the beginning as PurePro germinates quickly. And with quick germination comes quick grow-in allowing minimal weed intrusion. Once the surface is established, maintenance is simple. Reel or rotary mowers work equally well with less tendency for scalping than some varieties. If scalping does occur, PurePro recovers quickly.

Sustainability characteristics make PurePro an environmentally sound choice. With strong disease resistance, PurePro requires fewer inputs. Furthermore, drought tolerance and salt tolerance mean that PurePro can be irrigated less often, and effluent water is an option. In addition, PurePro is heat tolerant, withstanding the extreme temperatures of the Gulf Region.

Aesthetically, PurePro is dark green and soft textured. The turf retains its vibrant colour longer during the cooler months

than many other varieties. If year-round color is desired, overseeding with ryegrass works well. As temperatures rise, PurePro transitions out of overseeding quickly.

The turf demonstrates strength and performance with exceptional density and deep rooting. PurePro withstands heavy traffic and recovers quickly from injury.

### Why Seed?

With the options to sod, sprig, or seed, which method is best for landscape projects? While each has its advantages, the case for seeding can be very strong. Convenience is a compelling reason. Unlike sod or sprigs that must be planted soon after harvesting, seed is easily stored in any cool, dry location until the project is ready. Seeding requires less labor than either sodding or sprigging, and planting rates can be adjusted depending on the requirements. Seeding leads to faster grow-in times than sprigging and can be more economical than sprigging or sodding.

### Establishment and Maintenance

Viability of the seed is key to germination and establishment. PurePro features the patented PURECOAT+™ water-absorbent coating, which serves to enhance establishment and survivability. The coating provides the seedling with special nutrients and water absorption capabilities and helps to guard against environmental pressures.

PurePro is available through Polyclean for on-demand purchase when ready to plant, or the seed can be acquired in advance and stored until needed. Before planting, store the seed in a dry, air-conditioned space. Improper storage can lead to decreased germination. Seeding rates vary depending on grow-in goals, but the recommended rate is 4.5 to 15 grams per square meter of coated seed.



## GRASS



The right preparation before planting is important. Soil and water testing are the first steps. Soil test results are an invaluable guide to balancing the nutrients and creating optimal growing conditions. Water tests measure pH, salt content, and other components. While PurePro can tolerate irrigation salt content up to approximately 3,000 ppm once established, clean water is required for germination and initial grow-in.

When planting, ensure seed to soil contact. Spreaders designed for seed are recommended. The surface should be lightly raked and gently rolled after seeding. To avoid decreased germination rates, take caution not to bury the seed. If the planting area is prone to erosion, consider hydroseeding.

Irrigation during establishment is critical. The seedbed should be kept moist for the first two to three weeks to ensure proper germination. This may require multiple watering each day to prevent the soil from drying out; however, avoid oversaturating the soil as seed movement can occur. Later as growth develops, less frequent, deeper watering can be implemented. The drought tolerance of bermudagrass is superior to many other species. After PurePro is established, irrigation needs should be determined using a moisture meter. Proper soil moisture and timing of irrigation cycles help to keep the turf in optimum condition.

### The Benefits of Interseeding

Another advantage of PurePro is its ability to be interseeded into existing turf. If circumstances make it difficult to remove an old stand of grass completely and replant, interseeding provides a solution that does not require stripping away existing turf. Whether the goal is to transition away from a lesser performing turfgrass or to give a boost to worn or damaged areas, interseeding is an effective way to improve turf quality. PurePro Seeded Bermudagrass can be

interseeded into existing stands of turfgrass for a gradual turf conversion or density boost without the inconvenience of turf removal and replanting. Interseeding with PurePro can also be part of a turfgrass preventative maintenance program for high traffic areas. Before thinning has a chance to occur, the turf density can be supplemented by interseeding. In the Gulf Region, the best times to interseed are between March and October when soil temperatures are ideal.

### PurePro Project Highlights

As one of the newest seeded bermudagrasses available, PurePro is already being utilized or trialed in many locations around the world, including:

- JA The Resort in Dubai
- Hong Kong Stadium in Hong Kong
- Foshan Golf Club in Guangdong, China
- Calabasas Country Club in California
- Landscape Management in Barbados
- Cabrits Resort & Spa Kempinski in Dominica
- Sandals St. Lucia Golf & Country Club in St. Lucia

### JA The Resort in Dubai

When JA The Resort in Dubai recently embarked on a reconstruction of their golf course, Harradine Golf Design utilized PurePro to great success. With an expedited schedule that allowed for the course to be closed for only about four months, germination of PurePro occurred in less than ten days with the turf ready for play in three months. Golf course architect Peter Harradine deemed it, "Quite an achievement."

Golf Course Superintendent Project Manager Nick Weller was impressed with PurePro as well. "It's doing very well with good color and rooting and making a good playing surface." ■





The perfect blend of  
**STRONG** and *beautiful*  
seeded bermudagrass

FOR EVERY LANDSCAPE SETTING

Soft texture // Wear tolerant and rapid recovery  
Dark green colour // Perfect for interseeding  
Quick germination and establishment  
Heat and salt tolerant

DISTRIBUTED BY:



BABIKER.KHATEEB@POLYCLEAN.AE  
WWW.POLYCLEAN.AE | 9714.3388.226

PurePro® Seeded Bermudagrass from Pure Seed  
is marketed worldwide by Atlas Turf International.

**PURESEED**





# Urban park and stadium act as city-shaping project

Optus Stadium and Chevron Park has revitalised a formerly isolated area of Perth

---

By: HASSELL

Stadium Park on the Burswood Peninsula in Perth, Western Australia is home to the city's new Optus Stadium. The 41-hectare precinct, designed by HASSELL, provides an engaging waterside environment for the world-class sports and entertainment venue, as well as an impressive array of casual recreational facilities for Perth's community and visitors to enjoy year-round.

A major attraction within the precinct is Chevron Parkland, a 2.6-hectare nature-play space that's designed to engage children and families with the natural environment and connect them with the indigenous cultural heritage of this land known to the Aboriginal community as 'Whadjuk Noongar' country.

Significantly, the Stadium Park development has rehabilitated this prominent site on the eastern





foreshore of the Swan River – once a waste ground of the city – to provide a collection of scenic promenades, cycle paths, and flexible event, play and picnic spaces; filled with landmark public artworks.

“The transformation of the stadium precinct foreshore into a multigenerational, nature-play space was an exciting placemaking opportunity for HASSELL. Our design synthesises the ecological revitalisation of the landscape with a celebration of its significance to the Whadjuk community through habitat creation, play, art and storytelling,” said Anthony Brookfield, Principal.

### **Rehabilitating Stadium Park – creating safe and healthy foundations for fun**

The Stadium Park site had endured significant environmental degradation over many years, due to its past uses as a sewerage treatment facility, cement works and rubbish tip. The Chevron Parkland site presented its own challenges, with its location between the river and the lake making it prone to geological instability and flooding.

The entire site has been rehabilitated, making it safe for the community and local wildlife. The capping of contaminants in latent soils, reduction of fertiliser use, and bio-filtering of surface water has improved the micro-organisms found in both the soil and the water. Site flooding has been mitigated through the creation of a series of mounds and undulations; with key play structures situated above the 1-in-100-year flood level and incorporating deep pile footings.

The HASSELL design introduced thousands of native plants creating a beautiful native setting with spectacular vistas across the river to the city. This naturalisation of the parkland and its lake and river edges, provides habitat and food for endemic insects, fish and bird life – including species suitable for foraging by the endangered Black Cockatoo. Native wildflower planting for endemic fauna also supports the cross pollination of plant life throughout the area.

Risk consultants and the Royal Life Saving Society assessed the waterside play area – informing the positioning of pathways, bio-engineering to water edges, benching of banks, sightlines, signage and CCTV.





## URBAN PARK



### Celebrating the Whadjuk Culture – the six seasons concept

At the beginning of the design process, representatives of the Whadjuk people were asked how they'd like their culture to be represented across Stadium Park. They identified the Noongar 'six seasons' as the overarching theme to express the Aboriginal connection to the land (country) in balance and harmony. From this idea, HASSELL collaborated closely with the Whadjuk Working Party to integrate interpretive elements throughout the landscape design.

Chevron Parkland comprises six key zones, each representing one of the Noongar seasons – Djeran, Makuru, Djilba, Kambarang, Birak and Bunuru – through planting palettes, materiality, nature-play themes and interpretive educational signage. A collection of 14 public artworks is also woven through the landscape. Ten of these works are by indigenous artists, with eight of the artists from the local Whadjuk community.

In these unique and intriguing spaces, visitors can gain a sense of the culture and learn more about indigenous traditions and how they relate to the environmental conditions of each seasonal change. For example: Birak season is the 'first summer' when temperatures rise, so this play-space is about finding places to beat the heat – like the 'numbat burrows' and tunnels that create a cool, sensory space with rich textures and colours to explore.

### 365 days of nature play, and more

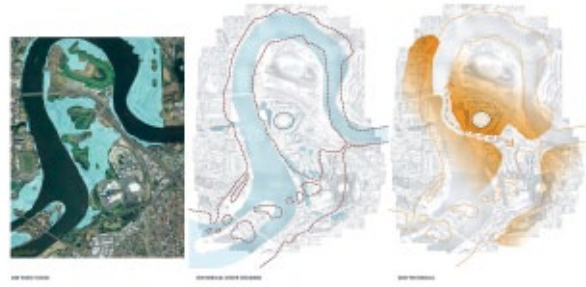
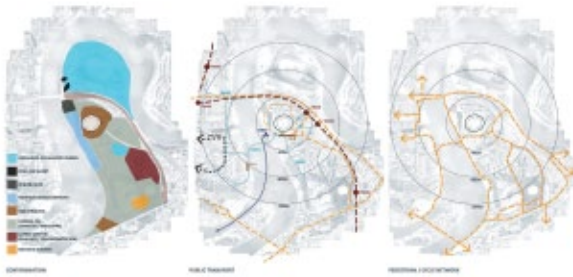
Another key objective of the Chevron Parkland design was to create an expansive area of urban bushland, where children of all ages can play safely with opportunities to roam free, fully immersing themselves in the natural environment.

"We want children to discover their passion for nature at Chevron Parkland. Ideally, they will become the stewards of the park – shaping its evolving character through the migration



1. OPTAG Stadium
2. The At-Bout
3. Gate A
4. Gate B
5. Gate C
6. Gate D
7. Gate E
8. Stadium Main West
9. Stadium Main East
10. Stadium Main West Foyer
11. Stadium Main East Foyer
12. Stadium Main West Foyer
13. Stadium Main East Foyer
14. Stadium Main West Foyer
15. Stadium Main East Foyer
16. Stadium Main West Foyer
17. Stadium Main East Foyer
18. Stadium Main West Foyer
19. Stadium Main East Foyer
20. Stadium Main West Foyer
21. Stadium Main East Foyer
22. Stadium Main West Foyer
23. Stadium Main East Foyer
24. Stadium Main West Foyer
25. Stadium Main East Foyer
26. Stadium Main West Foyer
27. Stadium Main East Foyer
28. Stadium Main West Foyer
29. Stadium Main East Foyer
30. Stadium Main West Foyer





of sticks and stones, the building of forts and cubbies, and forming new paths, lookouts and dens,” said Hannah Galloway, Senior Associate at HASSELL.

To encourage engagement and creativity, a series of nature-play zones were created offering a mix of structured and unstructured activities. They include various climbing, balancing, tunnelling and ‘chill out’ elements, with sand pits and lookouts. Each zone is separated by indigenous planting, creating a sense of discovery and adventure between activities.

The wider Stadium Park also incorporates a more structured sensory play-space with musical instruments, trampolines, climbing ropes and more; and a community sports oval is available for public use on non-game days. The design ties the stadium and its landscape surrounds together using a clear network of pathways and plazas. A sculptural community arbour links the stadium to the new HASSELL-designed Stadium Station and the Swan River – connecting the precinct to the city via rail, bus, ferry and the new Matagarup Bridge. ■

*“One of the new stadium’s defining qualities is that it’s set within a park. The parklands are full of engaging places and spaces for community sports, relaxation, entertainment, events and more. There’s something for everyone 365 days of the year.” said Galloway.*

Project name: Stadium Park & Chevron Parkland

Location: Burswood Peninsula, Perth, Australia

Landscape Architect: HASSELL

Scale: 41 ha (entire Stadium Park)/ 2.6 ha (Chevron Parklands)

Completed: December 2017

Client: Westadium / Western Australian Government

Contractor/Developer: Multiplex

Collaborators Architecture: HASSELL, COX, HKS

Indigenous Consultation Group: Whadjuk Working Party

Consultants: Landscape Contractor: Deep Green Landscaping; Public Art

Consultant: FORM

Artists: Tjyllyungoo Lance Chadd, Jade Dolman, Chris Drury, Flint Edwards,

Sharyn Egan, Miranda Farmer, Kylie Graham, Norma McDonald, Barry

McGuire, Laurel Nannup, Fiona Reidy, Kim Scott, Jonathan Tarry, Chris Nixon

& Tom Lucey (with Ned Beckley, Sam Price and Steve Berrick)

Imagery: Robert Frith (Acorn Photography); Peter Bennetts; HASSELL

Video: <https://vimeo.com/266250204>

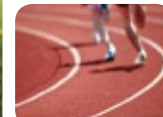
For more information visit [www.hassellstudio.com](http://www.hassellstudio.com)



**Sports | Playgrounds  
| Outdoor Solutions | Flooring**



**OUR WORLD IS YOUR PLAYGROUND**



Our Partners



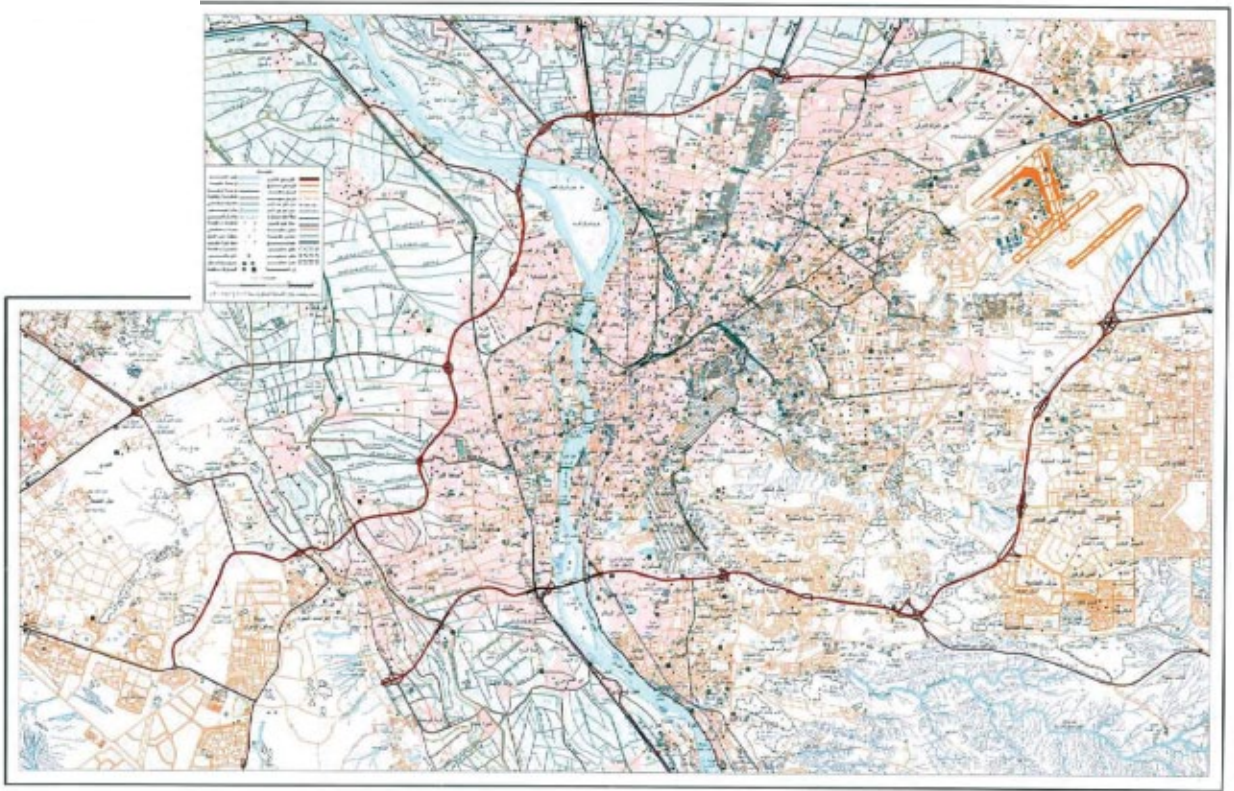
Dubai | Jeddah | Riyadh | Dammam | Muscat

T: +971 4 2888972 | M: +971 544 666469

Dubai.office@farisgroup.net | [www.farisgroup.net](http://www.farisgroup.net)

# Ring Road Development

By Rasha Sayed



*The Greater Ring Road which intersects with the Project and Project area*

## Socio-economic and Cultural Sustainable Development

Cairo, one of the greatest metropolitan cities in the world, the urban agglomeration of Cairo, designated as the Greater Cairo Metropolitan Area (GCMA), is the largest urban area in Egypt, Africa, and the Middle East and amongst the most populous metropolises of the world. In 2006, its population reached 17 million people spread across the governorates of Cairo, Giza and Qalyobiya as well as many new cities. The heartbeat of the metropolises' transport system is Ring Road,

connecting all of the main arterial zones and settlements across the capital. The main purpose of this ring road was to connect all the administrative regions of the city. However, it also cuts through the informal settlement and slums of the greater Cairo area.

Ultimately the Ring Road was unsuccessful in achieving its main purpose: to stop the urbanization of arable lands by creating a barrier around the Greater Cairo region. The existing Ring Road causes traffic



### Ring Road History

*There were three master plans for the urban development of Cairo, in 1956, 1970 and 1983. Ring Road first appeared in the second plan as a beltway encompassing three of the four sides of the Greater Cairo region, and linking all the 16 administrative regions that the plan created. In the third master plan, approved in 1984 under the government of Hosni Mubarak and in collaboration with France, it appeared as a 73 km (45 mi) long beltway. It would connect the new 16 administrative regions of the city and would isolate them from the rural areas. It was left unfinished due to part of the road passing too near the Pyramids of Giza. The Egyptian government planned to close it by building a road over the Mariouteya waterway. One of the road's main functions was to stop the urbanization of arable lands by creating a barrier around the Greater Cairo region. However, it was unsuccessful, with the urbanization instead tripling and the remaining arable land inside the perimeter condemned to further urbanization. There were also negative effects, like settlements being cut in two parts, with the outer part getting isolated. It also helped rich people create luxury urbanizations outside of the main city nucleus, following the example of American cities like Los Angeles and straying away from the European model of compact cities. A secondary purpose was to reduce the traffic inside the city.*

Group of photos show the shape and different urban fabric along the different places on Ring Road

conjunction and facilitates unappropriated commercial functions around these settlements, including having the knock-on effect of causing land prices to rise resulting in the construction of high rise residential towers, which act as walls along the ring road and isolate backward settlements from the city causing disruption to the lives of kiosk owners and small transportation companies who provide tuk tuk services.

As it stands, Ring Road remains problematic: causing major problems especially in socio-economic terms, however, it still has potential to reconsider its boundaries to prevent this socio-economic ring cutting of all the governorates in the greater Cairo area. After all, it's the life arterial that people depend on for their transportation and most of the socio-economic activities like small trades and cafes, this will give the opportunity

to enhance the future dealing with people in these settlements through three main phases, starting with organizing the direction of traffic flow and at same time give locals the opportunity to have commercial activities on both sides, then start working with local stakeholders and all involved sectors on the main arterial inside these settlements to link them with the Ring road. Finally, have the chance to work in between spaces and urban development for all these connected zones.

### Project Description:

The project will deal with first the RING ROAD and the surrounding settlement to reach sustainable socio-economic development in these places while simultaneously enhancing the traffic process inside Cairo and other connected zones.

## SUSTAINABLE LANDSCAPE



*The project will start working on three-phases:*

- Phase one: Trolleybus revival & Exits socio-economic development.
- Phase two: In-between spaces vitality and connectivity.
- Phase three: sustainable socio-economic development with stakeholder.

*Phase one: Trolleybus revival & Exits socio-economic development*

Tram and trolleybuses now exist in most developed and developing countries, in Egypt for example, the tram existed in most of Cairo and Alexandria since the 60's and still to this day there are tram lines in places such as Masr Elgededa. For the Ring Road, the traffic depends on vehicles and public buses, and somehow it is compromising the shortage of the Metro for the areas that lack metro access. Over time, this resulted in the emergence of cheap transport like Tuk

tuks and small buses (Tomnaya) that increase unorganized traffic jams and accidents.

*Therefore, in this phase the below is needed:*

- Replace all the unauthorized and small cheap means with one available cheap vehicle like Trolleybus
- Enhance and organize the activities for each exit so they can exist in a way that permits the appropriate traffic and allows appropriate stakeholders to carry out business activities

In conclusion, the Ring road in Egypt is a unique transportation link unlike any other arterial road in any other country. Therefore, it requires a different thought process and more than one prototype or masterplan.

*The intervention must deal with surrounding urban elements to:*

- Enhance the effectiveness of the road

### Giza controversy

*Ring Road's original route in 1984 took it very near the Giza pyramids, an area which has been on the UNESCO's World Heritage List since 1979. In 1994, The Independent newspaper alerted the world [8] that the construction was probably destroying ancient burial sites since no proper controls were made. [9] Also, it would pass by the South of the Giza plateau, isolating it from the open desert by surrounding it with roads on its four sides and bringing enormous urbanistic pressure. [9] UNESCO pressured the Egyptian government, which resulted in the construction being halted of that part of the road in 1995. [2] A UNESCO committee recommended in 1995 to follow the Mariutiya Canal or the El Mansuriya Canal, thus passing the road North of the plateau. [10] In 2002, there were discussions about building an underpass or a tunnel. [11]*



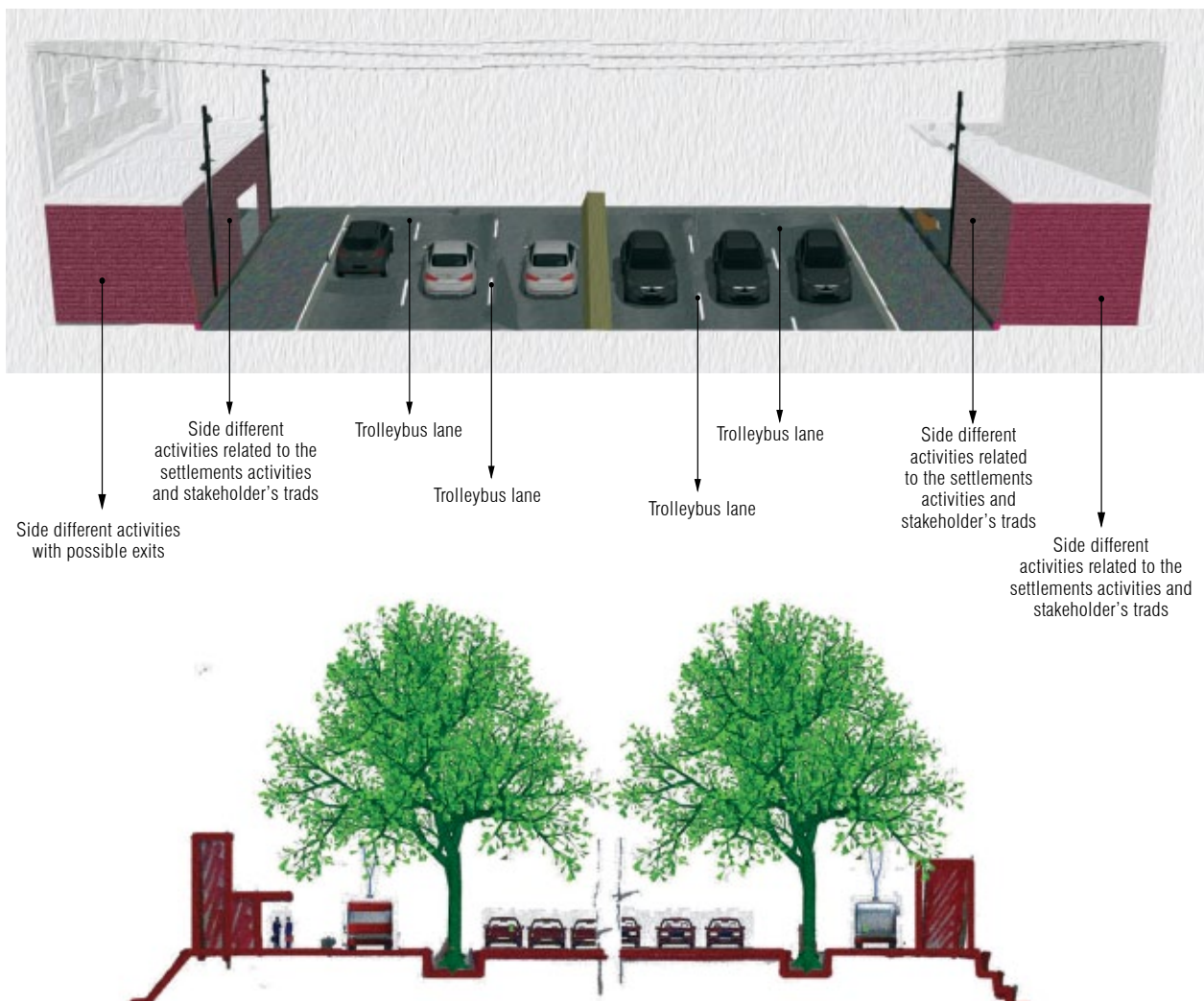
- Enhance the image and visual aspects of the main arterial of this fringe Ring road
- Encourage and promote local contribution to ensure sustainable socio-economic development

Phase one will divide the width of the ring road into three main zones, zone one will be for exits with appropriate distances that allow small commercial activities and are an indicator for these

exits with max width of 2.5 m on the ring road itself, zone two will be for the Trolleybus with stops every appropriate distance specially near the exits, zone three will be for the vehicles shown in the following sections.

Providing Trolleybus will prevent the existence of Tuk tuks and small buses on the ring road with the supervision of government and the involved sectors. ■

*Photo 1 and 2 indicate to possible side lane for trolleybus placing, photo 3 indicate to places with possible exits and side activities like gates for backward community*



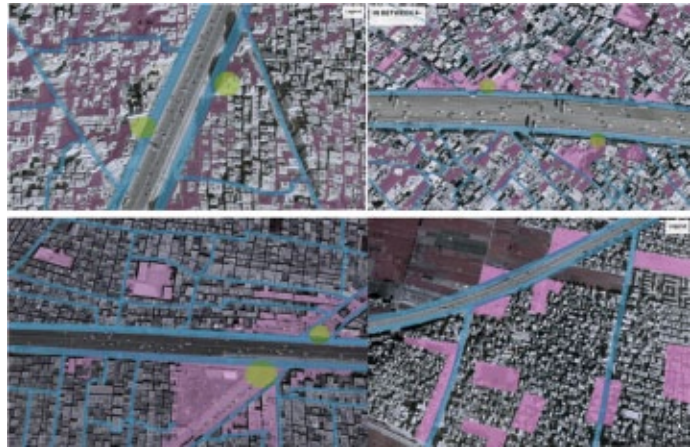
## I SUSTAINABLE LANDSCAPE

### Phase 2: In-between spaces vitality and connectivity

As previously mentioned, the ring road along Cairo surrounded by different category of urban hoods social, cultural, and physically. Therefore, in phase 2 selection of in-between spaces that are could be transformed and linked with ring road could help effectively in not just ring road development but also connect all the surrounding community to this effective development, not just through the point of elevations but the development of the communities socially and culturally.

Therefore, selecting these spots should relate to the accesses of the trolleybus and stops to ease the accessibility even walking distance to urban development spots and then relate these spots to the community activities in phase three. As previously mentioned, ring road along Cairo surrounded with different category of urban hoods social, cultural, and physically.

- Implement massive survey in each settlement for the bad current statues building that is vulnerable to demolished ad start to replace their inhabitant in each same urban hood and replace these buildings with open access social interactive gardens that are connected directly to the ring road for easy access.



- In between spaces that could be changed into development pockets for social cultural environmental and economic community developments
- Sides of the ring road and future possible connection with trolleybus and community behind, starts with bus stops and future upgrading spots.
- Trolleybus stops connected with developed spots and it presents as developments gates to the community behind

- These projects should be operated with the help of local stakeholders and local investors even small local investors to guarantee sustainable maintenance. Local stakeholders with the help of women working from their homes or having direct supervision on their children in the same location would help effectively to guarantee the sustainability of the project and its development at the same time.

### Phase 3: Sustainable socio-economic development with stakeholder

Local population and local stakeholders are the key successful for any socio-economic development project sustainability. In Egypt, there are different communities that could refuse any interference except it comes from their own society (inside development). In addition, this kind of strategic project could require too many resources and different authorities cooperated to achieve the goal, in that case local stake holders could consume the time, effort and some resources to increase the visibility of project implementation.

To achieve this goal should cluster should be studied in away of sorting the economic and culture aspects that could be the anchor to start the development. Like if the community depends on agricultural, the development could start from women in house by giving them the chance to manufacturing part of their goods insides their homes and then offer them the place near from the ring road and trolleybus stops to sell their products with affordable prices and ease the transportation for them.

Development starts with economic aspects with the affordability of accessibility and transportation with new system of ring road trolleybus and its stops which could be reused and developed with time to other transportation systems. After the choices that have been made during phase 2 and its socio-economic



culture spots for development, the economic aspects could reflect more sustainability for the upgrading that will shiftily happened in the society. Communities around ring roads are sometime homogenies and some time compatible, therefore at same time both phases could be executed parallel to each other's (phase 2&3). In cooperated design that allow local people and local stakeholders to design their own public spaces according there needs and vision is the target here through implementing workshops and events that integrate people with authorities and NGO's.

*Group of photos for students work (MSA Design 8 course 2011) in house for in between spaces development in downtown Cairo. Reuse of in-between spaces according to population surveys and incorporated design.*

Uniflora offers a wide range of products and services to clients including:

- Flower Arrangements for Events
- Cut Flowers and Bouquets
- Indoor and Outdoor Live Plants
- Preserved and Artificial Plants
- Green Walls
- Moss Walls
- Grow Lights
- Pots and Planters





## MATURED ACCENT TREES (OLIVE) AVAILABLE NOW IN THE GCC

By: Shaaista Ahmed

*This article is part three of the 'Matured Ornamental Trees' series. The first article was published in Landscape Magazine issue: May 2019 and is titled 'Matured Ornamental Trees Available Now in the GCC'. The second article was published in Landscape Magazine issue: June 2019 and is titled 'Matured Accent Trees (Plumeria) Available Now in the GCC'.*

Acacia LLC, a subsidiary company under the Tanseeq Investment Group of Companies, is currently a leading supplier of matured ornamental trees for landscaping projects in the GCC. Purchasing matured trees has major time and cost saving benefits as it annuls the process of having to plant seedlings and wait several years for the trees to mature. This can additionally save valuable resources, especially if the seedlings do not manage to grow to expectations.

The previous article covered Plumeria trees that are widely used as accent trees in local landscaping which serve to highlight key attractions and enhance visual experience. The second species covered in this article is the Olive Tree, which is equally popular and attractive.

Acacia LLC specializes in supplying eleven different forms of Olive trees that are imported from Europe:

- A. Olea europaea: Bonsai
  - B. Olea europaea: Multi-Branch Linear
  - C. Olea europaea: Specimen 1
  - D. Olea europaea: Specimen 2
  - E. Olea europaea: Cone Shape
  - F. Olea europaea: Espalier
  - G. Olea europaea: Half-Standard
  - H. Olea europaea: Mini-Standard
  - I. Olea europaea: Standard
  - J. Olea europaea: Pon Pon
  - K. Olea europaea: Multi-Branch Specimen
- [See Figure A-K sand Tables 1-10]

There are currently no official standards available locally for Olive trees to adapt for their application.

Tanseeq Investment LLC heads a group of eighteen successful companies founded and headed by (Chairman) Mr Ahmad Anoohi and (Group CEO) Mr Naser Ahmed. Each company specializes in a select discipline of landscaping and, together, offer a one stop solution for all landscaping requirements.

Hence, Acacia LLC has developed its own set of applied parameters under the guidance of Tanseeq Investment's Group CEO Mr. Naser Ahmed. These are:

1. Pot size
2. Girth
3. Over all height
4. Clear trunk (dependent on species)

Olive trees are highly ornamental plants which are ideal for topiary - they keep their foliage year-round and have a beautifully sculpted trunk and branch structure. Olive trees become more gorgeous with age and are extensively used in hotels, corporate landscaping and streetscapes.

For example, the *Olea Europaea*: Specimen trees are popularly used as accent trees in roundabouts and villas. The *Olea Europaea*: Half-Standard, *Olea Europaea*: Mini-Standard and *Olea Europaea*: Multi-Branch Specimen are particularly favoured to go in planters.

Similar to most other evergreen trees, Olive trees are slow growing which makes them pair especially well with planters as they do not need to be re-potted for several years.

They look stunning when planted in decorative containers and require relatively low maintenance to flourish. Olive trees in general are very versatile and make a majestic addition to any landscaping project.



Email: [info@acacia-ae.com](mailto:info@acacia-ae.com)  
Website: [www.acacia-ae.com](http://www.acacia-ae.com)



# TREES

Figure A.



**Olea erupaea**  
Form: Bonsai

Figure B.



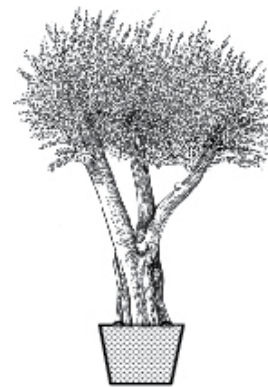
**Olea erupaea**  
Form: Multi-Branch Linear

Figure C.



**Olea erupaea**  
Form: Specimen 1

Figure D.



**Olea erupaea**  
Form: Specimen 2

Figure E.



**Olea erupaea**  
Form: Cone Shape

Figure F.



**Olea erupaea**  
Form: Espalier

Figure G.



**Olea erupaea**  
Form: Half-Standard

Figure H.



**Olea erupaea**  
Form: Mini-Standard

Figure I.



**Olea erupaea**  
Form: Standard

Figure J.



**Olea erupaea**  
Form: Pon Pon

Figure K.



**Olea erupaea**  
Form: Multi-Branch Specimen

*Please note illustrations are not drawn to scale.*

Email: [info@acacia-ae.com](mailto:info@acacia-ae.com)  
Website: [www.acacia-ae.com](http://www.acacia-ae.com)

**Table 1: Specifications for Olea europaea Bonsai**

Type	Pot size (Lt)	Girth (cm)	Overall Height (m)
Type 6A	230LP	80-70cm girth	2.0-1.5m
Type 6B	350LP	80-70cm girth	2.0-1.5m
Type 6C	500LP	90-80cm girth	2.0-1.5m
Type 6D	500LP	100-90cm girth	2.0-1.5m
Type 6E	500LP	120-100cm girth	2.0-1.5m
Type 6F	500LP	140-120cm girth	2.5-2.0m
Type 6F	500LP	140-120cm girth	2.5-2.0m
Type 6G	500LP	160-140cm girth	2.5-2.0m
Type 6H	500LP	180-160cm girth	2.5-2.0m
Type 6I	500LP	200-180cm girth	2.5-2.0m
Type 6J	1000LP	250-200cm girth	3.0-2.5m
Type 6K	1000LP	300-250cm girth	3.0-2.5m

**Table 2: Specifications for Olea europaea Multi- Branch Linear**

Type	Pot size (Lt)	Girth (cm)	Oah (m)
Type 4A	12LP		1.5-1.0m
Type 4B	35LP		1.5-1.0m
Type 4C	70LP		2.0-1.5m
Type 4D	110LP	50-40cm girth	2.0-1.5m
Type 4E	280LP	60-50cm girth	2.5-2.0m
Type 4F	350LP	70-60cm girth	2.5-2.0m
Type 4G	500LP	80-70cm girth	2.5-2.0m
Type 4H	500LP	100-90cm girth	3.0-2.5m
Type 4I	500LP	120-100cm girth	3.0-2.5m

**Table 3: Specifications for Olea europaea Specimen 1 and 2**

Type	Pot size (Lt)	Girth (cm)	Oah (m)
Type 7A	230LP	80-70cm girth	2.0-1.5m
Type 7B	350LP	80-70cm girth	2.0-1.5m
Type 7C	500LP	90-80cm girth	2.0-1.5m
Type 7D	500LP	100-90cm girth	2.0-1.5m
Type 7E	500LP	120-100cm girth	2.0-1.5m
Type 7F	500LP	140-120cm girth	2.5-2.0m
Type 7G	500LP	160-140cm girth	2.5-2.0m
Type 7H	500LP	180-160cm girth	2.5-2.0m
Type 7I	500LP	200-180cm girth	2.5-2.0m
Type 7J	1000LP	250-200cm girth	3.0-2.5m
Type 7K	1000LP	300-250cm girth	3.0-2.5m
Type 7L	230LP	80-70cm girth	3.0-2.5m

**Table 4: Specifications for Olea europaea Cone Shape**

Type	Pot size (Lt)	Girth (cm)	Oah (m)
Type 9A	45LP	NA	2.0-1.5m
Type 9B	60LP	NA	2.5-2.0m
Type 9C	70LP	NA	3.0-2.5m

**Table 5: Specifications for Olea europaea Espalier**

Type	Pot size (Lt)	Girth (cm)	Oah (m)
Type 10A	45LP	NA	1.5-1.0m
Type 10B	75LP	NA	2.0-1.5m

**Table 6: Specifications for Olea europaea Half-Standard**

Type	Pot size (Lt)	Girth (cm)	Oah (m)	Clear trunk (m)
Type 2A	18LP	18-16cm girth	1.75-1.5m	1.25-1.0m ct
Type 2B	45LP	20-18cm girth	2.0-1.75m	1.5-1.25m ct
Type 2C	75LP	25-20cm girth	2.0-1.75m	1.5-1.25m ct

**Table 7: Specifications for Olea europaea Mini-Standard**

Type	Pot size (Lt)	Girth (cm)	Oah (m)	Clear trunk (m)
Type 1A	5LP	10-8cm girth	0.75-0.5m	
Type 1B	10LP	12-10cm girth	1.0-0.75m	
Type 1C	10LP	14-12cm girth	1.5-1.0m	
Type 1D	18LP	16-14cm girth	1.75-1.5m	1.0m ct
Type 1E	45LP	18-16cm girth	2.0-1.75m	1.0m ct
Type 1F	45LP	12-10cm girth	2.0-1.75m	1.0m ct

**Table 8: Specifications for Olea europaea Standard**

Type	Pot size (Lt)	Girth (cm)	Oah (m)	Clear trunk (m)
Type 3A	45LP	14-12cm girth	3.0-2.5m	1.5m ct
Type 3B	45LP	12-10cm girth	3.0-2.5m	1.5m ct
Type 3C	45LP	16-14cm girth	3.0-2.5m	1.75-1.5m ct
Type 3D	45LP	18-16cm girth	3.0-2.5m	1.75-1.5m ct
Type 3E	75LP	20-18cm girth	3.5-3.0m	1.75-1.5m ct
Type 3F	75LP	18-16cm girth	3.5-3.0m	1.75-1.5m ct
Type 3G	75LP	25-20cm girth	3.5-3.0m	1.75-1.5m ct
Type 3H	75LP	30-25cm girth	4.0-3.5m	2.0-1.5m ct
Type 3I	75LP	40-30cm girth	4.0-3.5m	2.0-1.5m ct
Type 3J	75LP	50-40cm girth	4.0-3.5m	2.0-1.5m ct

**Table 9: Specifications for Olea europaea Pon Pon**

Type	Pot size (Lt)	Girth (cm)	Oah (m)
Type 5A	150LP	50-40cm girth	2.0-1.5m
Type 5B	230LP	60-50cm girth	2.0-1.5m
Type 5C	230LP	70-60cm girth	2.0-1.5m
Type 5D	500LP	80-70cm girth	2.0-1.5m
Type 5E	500LP	90-80cm girth	2.5-2.0m
Type 5F	500LP	100-90cm girth	2.5-2.0m
Type 5G	150LP	50-40cm girth	3.0-2.5m
Type 5H	230LP	60-50cm girth	3.0-2.5m
Type 5I	230LP	70-60cm girth	3.0-2.5m
Type 5J	500LP	80-70cm girth	3.0-2.5m
Type 5K	500LP	90-80cm girth	3.0-2.5m
Type 5L	500LP	100-90cm girth	3.0-2.5m

**Table 10: Specifications for Olea europaea Multi-Branch Specimen**

Type	Pot size (Lt)	Girth (cm)	OAH	Clear Trunk
Type 2A	18LP	16-14cm girth	1.5-1.2m	0.8-0.6m ct
Type 2B	45LP	18-16cm girth	1.5-1.2m	1.0-0.8m ct
Type 3C	45LP	20-18cm girth	1.8-1.5m	1.0-0.8m ct
Type 3D	45LP	25-20cm girth	1.8-1.5m	1.2-1.0m ct
Type 3E	75LP	40-30cm girth	2.5-2.2m	1.2-1.0m ct
Type 3F	90LP	50-40cm girth	2.5-2.2m	1.2-1.0m ct
Type 3G	90LP	60-50cm girth	2.5-2.2m	1.2-1.0m ct

\*Oah - Overall height

Email: [info@acacia-ae.com](mailto:info@acacia-ae.com)  
Website: [www.acacia-ae.com](http://www.acacia-ae.com)



# Tropical Paradise in Egypt

By: AFKAR

Sunrise Diamond Beach Resort is located in Egypt, Sharm EL Sheikh with direct access to the Red Sea. Afkar's scope is to provide landscape design for the resort taking into consideration the different height levels between the building and the sea (18m). The result is a lush tropical garden with various ramps, cascades and a wooden pergola to solve the 18m difference between the building and the sea. The landscape design promotes the sea view with special attention paid to ensure visitors can catch a glimpse of the Red Sea from most places in the resort, whether they are relaxing by the swimming pool or lounging under the tropical plants in the year round sunshine.





*The project Name:*  
Sunrise Diamond Beach Resort.  
*The location:*  
Egypt, Sharm EL Sheikh  
*The owner:*  
Dorra Group  
<https://www.dorra.com>  
*Design by:*  
AFKAR  
<https://www.afkar.linedraw.info>





## ECOLOGICAL GARDEN

# WILDERNESS AT HOME

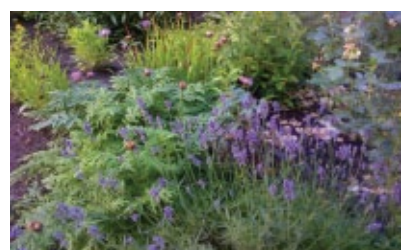
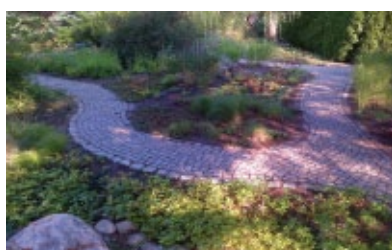
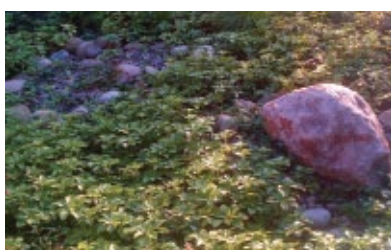
A residential garden in Berlin strikes the perfect balance

By: Anna Klingmann

KLINGMANN, a global boutique firm known for its innovative approach to merging architecture and branding, was commissioned by an elderly German couple to design a low-maintenance and ecologically friendly garden on a private 1,277m<sup>2</sup> residential site in Berlin. The clients wanted to reduce the amount of maintenance and watering on their property, while enhancing the privacy and beauty of their garden.

The design transforms this formerly flat site into a varied undulating topography, which is shaped by a series of rain gardens. The rain gardens are designed as shallow planted depressions, which temporarily hold and soak in rainwater runoff that flows from the surrounding roofs, driveways, and patios, until it soaks into the soil. This measure reduces the need for watering while creating visual interest in a park-like environment that can be experienced by a series of curvilinear footpaths.

Interconnected loops of meandering cobblestone pathways establish planting zones on different levels composed of sunken rain gardens and grassy mounds while leading through small and intimate areas for sitting and reading and to larger patios for relaxing in the sun and dining. A combination of native structural plants and fillers composed of shrubs, tall grasses, and flowers exemplify the inspiration of nature and create a composed feeling of randomness and vastness – harmoniously blending with the surrounding landscape in the distance. The plantings intersperse colorful perennials with grasses, ground covers and pebbles generating a creative tension that keeps both the eye and the imagination interested. The design creates a choreographed experience within a composed wilderness, allowing for a park-like environment within the microcosm of a private garden that allows both for quiet contemplation and social interaction. ■





# FUTURE LANDSCAPE & PLAYSACES **KSA**

**4 - 5 November 2019**  
Riyadh, Saudi Arabia

**DISCOVER LATEST AND FUTURISTIC  
LANDSCAPE AND CREATIVE  
PLAYSPACES FOR NEW AND FUTURE  
DEVELOPMENT PROJECTS**



## ADVISORY BOARD



**Dr. Abdulgadir Amir,**  
Deputy Minister, Technical Affairs,  
Ministry of Municipal and Rural Affairs



**Eyad M. Fadul,**  
Advisor, Vision Realization Office (VRO),  
Ministry of Hajj and Umra, Jeddah



**Dr. Giancarlo Mangone,**  
Principal, Symbiosis: Sustainable Design +  
Consulting and Master Urban Planner

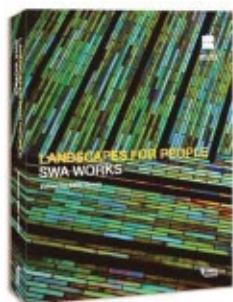


**Muhammad Majid Khan,**  
Garden Engineer (Jeddah Municipality),  
WSP Middle East

[www.futurelandscapeandplayspacesksa.com](http://www.futurelandscapeandplayspacesksa.com)

For more information or to register,  
E-mail: [opportunities@acm-events.com](mailto:opportunities@acm-events.com) or  
Call: +971 4 563 1555

### BOOKS OF INTEREST



#### SWA WORKS: LANDSCAPES FOR PEOPLE

ISBN: 9789881249159

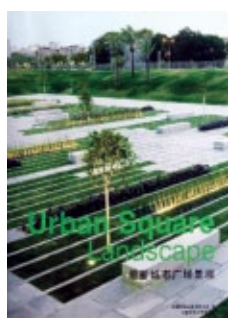
Author: SWA Group

Publication Date: 1-Mar-14

##### Book Descriptions:

Landscapes for People is an attempt to elucidate unique solutions to these pressing issues around the globe. We believe landscape must go beyond simple problem solving and push the boundaries of what is possible given the realities of budget, politics, environment or cultural influences. We seek to understand the needs and aspirations of people in the landscapes we design at the variable scales of a plaza, a street or an entire city. Our passion is design that synthesizes aesthetics and sustainability, but always within the context of both human and natural systems. SWA WORKS is structured around four categories: urban regeneration, creative campus, lifestyle and adaptive strategies. Our hope is that one will find a sense of clarity and purpose in how our projects are organized under these four leading descriptions and

the unique associations between how the landscapes and people interact. We hope you'll find beauty in the work, and be inspired to participate in the everyday spaces that make up the landscapes where we live, work or play. Landscapes for People are an attempt to elucidate unique solutions to these pressing issues around the globe. We believe landscape must go beyond simple problem solving and push the boundaries of what is possible given the realities of budget, politics, environment or cultural influences. We seek to understand the needs and aspirations of people in the landscapes we design at the variable scales of a plaza, a street or an entire city. Our passion is design that synthesizes aesthetics and sustainability, but always within the context of both human and natural systems. SWA WORKS is structured around four categories: urban regeneration, creative campus, lifestyle and adaptive strategies. Our hope is that one will find a sense of clarity and purpose in how our projects are organized under these four leading descriptions and the unique associations between how the landscapes and people interact. We hope you'll find beauty in the work, and be inspired to participate in the everyday spaces that make up the landscapes where we live, work or play.



#### URBAN SQUARE LANDSCAPE

ISBN: 9787561174685

Author: Gao Di Guo Ji Chu Ban You Xian Gong Si

Publication Date: 2/1/2013

##### Book Descriptions:

The square is a leisure place where people can escape from the hustle and bustle of the city to meet and relax. In the meantime, the square also reflects the characteristics of the local urban architecture and culture, as well as

people's intimacy of and regression to Nature. The book, selecting the world's newest square landscape design cases such as memorial squares, transport squares, campus squares, hospital squares, commercial squares, office squares, distribution squares and leisure squares, fully demonstrates square landscape design features in different regions and different cultural backgrounds. This book is a set of resources which is worth to collect and learn by landscape designers, architects and relevant practitioners.



#### URBAN PARK LANDSCAPES

ISBN: 9789881506986

Author: Sophia Song

Publication Date: 9/10/2011

##### Book Descriptions:

Urbanization around the world is happening at unprecedented levels. Urban parks are a precious natural environment within our urban setting. Designing them well, to accommodate both the

life and development demands of the present while also looking forward to the needs of our future generations and landscapes, requires a comprehensive look at creating healthy ecosystems and prosperous mega cities and how the two can coexist in the twenty-first century. This book includes many world-famous urban park landscapes. Through comprehensive presentation of pictures, explicit explanation of technical drawings, and detailed descriptions, the book can be a useful tool for designers to gain some inspiration and enlightenment.



# IPM DUBAI

International Plants Expo Middle East

12 - 14 | NOVEMBER  
DUBAI WORLD TRADE CENTRE

**Register  
Today!**

WWW.IPM-DUBAI.COM

Strategic partner:



An event organized by:



## COMPANY LISTINGS

### LANDSCAPE CONTRACTOR

#### ► Nakheel Landscapes

T: +974 44085333  
F: +974 44983420  
info@nakheelandscapes.com  
www.nakheelandscapes.com

#### ► Desert Group

T: +971 4 3404440  
T: +971 4 34044416  
group@desertgroup.ae  
www.desertgroup.ae

#### ► Innovator Speed Landscapes

T: +971 4 2242440  
daniel.innovatorlandscapes@gmail.com

### BUILDING MATERIALS

#### ► Creative Concrete Concepts

T: +971-6-532- 1119  
F: +971-6-532-8833  
www.tex-crete.com  
info@tex-crete.com

#### ► Hepworth

T: +971 4 2894670  
F: +971 4 2894620  
www.hepworth.ae

### FOUNTAIN

#### ► Watermaster

T: +974 4 4442494  
F: +974 4 4375923  
jtaouk@watermasterqatar.com  
www.watermaster.me

#### ► OASE Living Water

T: +971 4299 4847  
F: +49 5454 809412  
uae@oase-livingwater.com  
www.oase-livingwater.com

#### ► Ghesa

T: +971 4 4328299  
F: +971 4 4328298  
info@ghesa.ae  
www.ghesawaterart.com

### CAST STONE & CONCRETE STREET FURNITURE

#### ► Orient Stone Technology Factory L.L.C.

T: +971 6 543 0832  
F: +971 6 543 0831  
info@ost.ae  
www.ost.ae

### TURF/LANDSCAPE PROFESSIONAL PRODUCTS

#### ► Polyclean LLC

(Turf Division)  
T: +971 4 338 8226  
F: +971 4 338 8785  
babiker.khateeb@polyclean.ae  
riyad.mustafa@polyclean.ae  
www.polyclean.ae

### LANDSCAPE PRODUCTS

#### ► WT Burden

T: +971 4 8860700  
F: +971 4 8860701  
streetfurniture@wtburden.ae  
www.wtburden.ae

#### ► Tanseeq LLC

T: +971 4 3617199  
F: +971 4 3607966  
info@tanseeqllc.com  
www.tanseeqllc.com

### IRRIGATION

#### ► Hunter Industries

T: +001 760 591 7114  
F: +001 760 591 7194  
Hanna.Zaidan@hunderindustries.com  
www.hunterindustries.com

#### ► METTS Fzc

T: +971 4 4470927  
F: +971 4 4470928  
info@mettsfzc.com  
www.mettsfzc.com

#### ► Alwasail Industrial Co.

T: +971 4 8886987  
F: +971 2 6733565  
hashim@alwasail.com  
www.alwasail.com

#### ► Rain Bird

T: +971 4 8819671  
F: +971 4 8819672

### TREES & HERBS

#### ► Orientalis

T: +971 4 429 00 44  
F: +971 4 422 52 96  
info@orientalis.co  
www.orientalis.co

### SPORT'S FACILITIES / PLAYGROUND EQUIPMENTS

#### ► Raymond Sport

T: +971 4 3391331  
T: +971 2 4499196  
F: +971 4 3391080  
office@raymondsport.com  
www.raymondsport.com

#### ► Faris Group

T: +971 4 2888972  
dubai.office@farisgroup.net  
www.farisgroup.net

### ACQUATIC PLAY

#### ► Vortex

T: +15146943868  
info@vortex-intl.com  
www.vortex-intl.com

### SWIMMING POOL

#### ► Olympic Swimming Pools Installation LLC

T: +971 4 3362266  
F: +971 4 3355299  
info@ospools.com  
www.ospools.com

#### ► Pentair

T: +971 4 44470927  
F: +971 4 4470928  
malikhan@mettsfzc.com  
www.mettsfzc.com

#### ► Satma International L.L.C.

T: +971 4 2956088  
F: +971 4 2956077  
satmaint@emirates.net.ae  
www.satma.ae

### SOIL ADDITIVES

#### ► Zeoplant LLC

T: +971 4 4473588  
F: +971 4 4473587  
info@zeoplant.com  
www.zeoplant.com

#### ► Agri Soil Organic Fertilizer Trading

T: +971 4 2765988  
F: +971 42765977  
Mob +971559995196  
info.agrisoil@agritech-group.com  
www.agripower.com.au

### METAL FABRICATOR

#### ► m-tec

T: +466 125 4773718  
info@m-tec.uk.com  
www.m-tec.uk.com

### LANDSCAPE CONSULTANTS

#### ► JC Melone Landscape Design FZ LLE

T: +971 50 6410715  
jcmelone@gmail.com

List your company  
in our Listing  
Page that reaches  
thousands of  
subscribers

# Book your space Now!

Contact: admin@landscape-me.com • Tel: +971 4 4470927

AED  
**250**  
per month

# MIDDLE EAST'S PREMIER TRADE EVENT FOR URBAN GREEN SPACES

CREATING OUTDOOR SPACES



**25 - 28 NOVEMBER 2019**  
Dubai World Trade Centre



**DON'T MISS OUT ON THE OPPORTUNITY TO GROW YOUR BUSINESS**  
**ENQUIRE ABOUT EXHIBITING AT [WWW.UDLEXPO.COM](http://WWW.UDLEXPO.COM)**

LANDSCAPE SOLUTIONS  
PARTNER:



OUTDOOR LIVING  
SOLUTIONS PARTNER:



PLAYGROUND  
PARTNER:



LIGHTING  
PARTNER:



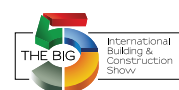
PAVERS  
PARTNER:



SUPPORTED BY::



PART OF:



ORGANISED BY:

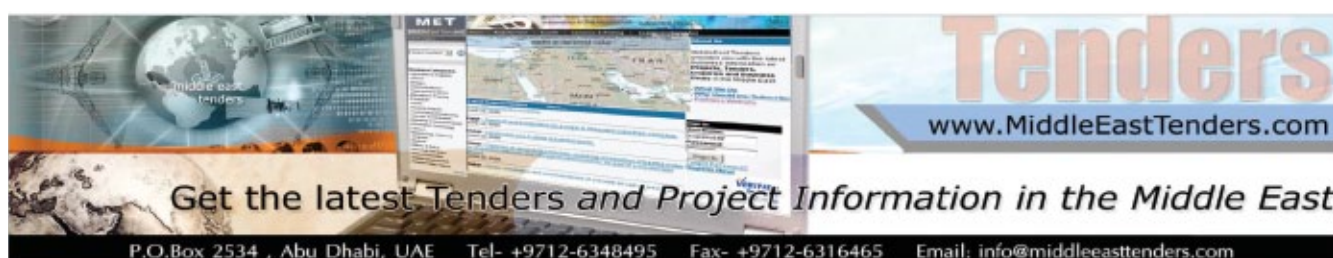


**STATUS : NEW TENDER**

**TRADE CATEGORY : AGRICULTURAL, LANDSCAPING AND IRRIGATION**

## NEW & CURRENT PROJECTS

Tender Name	Description	Client	Region	Tender Cost (USD)	Post Date	Closing Date
Garden	Provision of Gardens, Squares and Paths Scenes Rights.	Municipality of Haqou (Saudi Arabia)	Saudi Arabia	5333	8/29/2019	9/26/2019
Landscaping	Provision of Landscaping and Plant Maintenance Services.	Electricity & Water Authority - EWA (Bahrain)	Bahrain	39	8/28/2019	9/18/2019
Gardening and Ground Maintenance	Provision of work for Gardening and Ground Maintenance Services.	American Embassy (Saudi Arabia)	Saudi Arabia		8/24/2019	10/3/2019
Garden Tools.	Provision of work for Seed, Sapling, Manure and Garden Tools.	Samaritans Purse (USA)	Iraq		8/19/2019	9/5/2019
Plantations	Supply of Plantations for Laboratories and Laboratories.	King Abdul Aziz University (Saudi Arabia)	Saudi Arabia	800	8/8/2019	9/22/2019
Agricultural Materials	Supply of Agricultural Materials for the Nurseries of the Secretariat.	Riyadh Municipality (Saudi Arabia)	Saudi Arabia	800	8/8/2019	9/9/2019
Landscaping Maintenance	Provision of work for Landscaping Maintenance.	Sheraton Oman Hotel (Oman)	Oman	26	8/7/2019	9/12/2019
Fence and Nursery	Construction of a Gate, Fence and Nursery for Adam Farm.	Diwan of the Royal Court of Affairs (Oman)	Oman	779	8/6/2019	9/23/2019
Irrigation System	Supply and Installation of a Modern Irrigation System for Adam Farm.	Diwan of the Royal Court of Affairs (Oman)	Oman	2597	8/6/2019	9/23/2019
Irrigation Plant	Special Spare Parts for Irrigation Plant - a, Maintenance of Main Switching Stations	Ministry of Electricity & Water (Kuwait)	Kuwait	7	8/6/2019	9/18/2019
Gardening Work	Gardening Work for the Farms of Al-Dhara and Al-Barmi Governorates of the Million-Palm Agriculture Project.	Diwan of the Royal Court of Affairs (Oman)	Oman	390	8/5/2019	9/23/2019
Agriculture & Irrigation	Provision of work for Execution, Development and Maintenance of Aesthetic Agriculures and Irrigation.	Public Authority for Agricultural Affairs & Fish Resources - PAAFR (Kuwait)	Kuwait	3279	7/26/2019	10/20/2019
Landscaping & Irrigation	Provision of work for Annual Maintenance of Landscaping, Irrigation and Associated Works at South Sharqiya Governorate for 2020.	Ministry of Regional Municipalities, Environment & Water Resources (Oman)	Oman	117	7/23/2019	9/5/2019
Landscaping & Irrigation	Provision of Annual Maintenance of Landscaping, Irrigation and Associated Works at Al Dhakliya Governorate(1) for 2020.	Ministry of Regional Municipalities, Environment & Water Resources (Oman)	Oman	130	7/23/2019	9/5/2019
Landscaping Services	Provision of Landscaping Services	US Embassy (Jordan)	Jordan		7/23/2019	9/16/2019
Agriculures and Irrigation	Execution, Development and Maintenance of Aesthetic Agriculures and Irrigation in the Third District.	Public Authority for Agricultural Affairs & Fish Resources - PAAFR (Kuwait)	Kuwait	3279	7/23/2019	10/20/2019
Landscaping, Irrigation & Associated Works	Provision of Annual Maintenance of Landscaping, Irrigation and Associated Works at Al Dhakliya Governorate (2) for 2020.	Ministry of Regional Municipalities, Environment & Water Resources (Oman)	Oman	104	7/23/2019	9/5/2019
Landscaping & Irrigation	Provision of Annual Maintenance of Landscaping, Irrigation and Associated Works at Al Dhakliya Governorate(3) for 2.Vhu020.	Ministry of Regional Municipalities, Environment & Water Resources (Oman)	Oman	130	7/23/2019	9/5/2019
Landscaping, Irrigation & Associated Works	Provision of Annual Maintenance of Landscaping, Irrigation and Associated Works at Khasab and Bukha 2020	Ministry of Regional Municipalities, Environment & Water Resources (Oman)	Oman	117	7/23/2019	9/5/2019
Agriculture and Irrigation	Supply of Execution, Development and Maintenance of the Aesthetic Agriculture and Irrigation at the Gardens, Institutes and Buildings.	Public Authority for Applied Education & Training - PAAET (Kuwait)	Kuwait	3279	7/16/2019	9/15/2019
Nurseries maintenance	Maintenance and Operation of the Nurseries.	Qassim Municipality (Saudi Arabia)	Saudi Arabia	533	7/13/2019	8/19/2019
Irrigation Materials	Supply of Irrigation Materials	Dhofar Municipality (Oman)	Oman	154	7/11/2019	8/6/2019
Necessity of Park	Work of Guidance Boards for Necessity of Park Easy in Area of Qassim.	Ministry of Environment, Water and Agriculture (Saudi Arabia)	Saudi Arabia	267	7/11/2019	8/27/2019
Public Realm Works	Implementing Public Realm Works	Alijarah Holding (Qatar)	Qatar	13736	7/3/2019	9/1/2019



**Tenders**  
www.MiddleEastTenders.com

Get the latest Tenders and Project Information in the Middle East

P.O.Box 2534 , Abu Dhabi, UAE Tel- +9712-6348495 Fax- +9712-6316465 Email: info@middleeasttenders.com



**metts**

# Irrigation Auditing Saves Money

| [info@mettsfzc.com](mailto:info@mettsfzc.com) | [www.mettsfzc.com](http://www.mettsfzc.com)

*Irrigation Service Provider*



Landscape  
MIDDLE EAST  
AWARDS  
CEREMONY

2019

25 November 2019 at the Ritz Carlton DIFC, Dubai  
[admin@landscape-me.com](mailto:admin@landscape-me.com)